

For Research Use Only

1A6/DRIM Polyclonal antibody, PBS Only

Catalog Number: 18830-1-PBS



Basic Information

Catalog Number:

18830-1-PBS

Size:

100ug, Concentration: 1 mg/ml by Nanodrop;

Source:

Rabbit

Isotype:

IgG

GenBank Accession Number:

NM_014503

GeneID (NCBI):

27340

UNIPROT ID:

O75691

Full Name:

UTP20, small subunit (SSU) processome component, homolog (yeast)

Calculated MW:

318 kDa

Observed MW:

310 kDa

Purification Method:

Antigen affinity purification

Applications

Tested Applications:

WB, IF/ICC, IP, Indirect ELISA

Species Specificity:

human, mouse, rat

Background Information

1A6/DRIM has been identified as UTP20, a small subunit processome component, functioning in 18S rRNA processing. 1A6/DRIM was originally identified from the malignant derivative of an immortalized gastric epithelial cell line [1] and was found to be down-regulated in metastatic breast cancer cells (PMID: 21151873, 17498821).

Storage

Storage:

Store at -80°C.

Storage Buffer:

PBS only, pH7.3

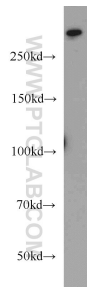
For technical support and original validation data for this product please contact:

T: 1 (888) 4PTGLAB (1-888-478-4522) (toll free in USA), or 1(312) 455-8498 (outside USA)

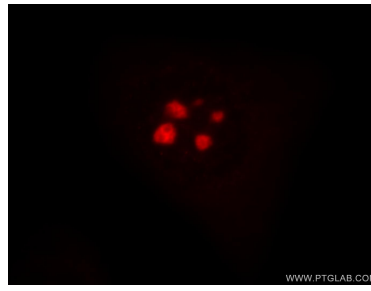
E: proteintech@ptglab.com
W: ptglab.com

This product is exclusively available under Proteintech Group brand and is not available to purchase from any other manufacturer.

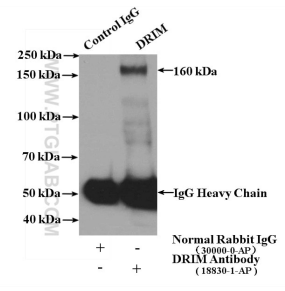
Selected Validation Data



HeLa cells were subjected to Tris-Acetate gel system followed by western blot with 18830-1-AP (1A6/DRIM antibody) at dilution of 1:1000 incubated at room temperature for 1.5 hours. This data was developed using the same antibody clone with 18830-1-PBS in a different storage buffer formulation.



Immunofluorescent analysis of HeLa cells, using UTP20 antibody 18830-1-AP at 1:50 dilution and Rhodamine-labeled goat anti-rabbit IgG (red). This data was developed using the same antibody clone with 18830-1-PBS in a different storage buffer formulation.



IP result of anti-1A6/DRIM (IP:18830-1-AP, 4ug; Detection:18830-1-AP 1:800) with HeLa cells lysate 4000ug. This data was developed using the same antibody clone with 18830-1-PBS in a different storage buffer formulation.