

For Research Use Only

KIF27 Polyclonal antibody

Catalog Number: 18833-1-AP



Basic Information

Catalog Number: 18833-1-AP	GenBank Accession Number: BC140788	Purification Method: Antigen affinity purification
Size: 150ul , Concentration: 133 µg/ml by Nanodrop and 133 µg/ml by Bradford method using BSA as the standard;	GeneID (NCBI): 55582	Recommended Dilutions: IF 1:20-1:200
Source: Rabbit	Full Name: kinesin family member 27	
Isotype: IgG	Calculated MW: 160 kDa	

Applications

Tested Applications: IF, ELISA	Positive Controls: IF : MDCK cells,
Species Specificity: human, Canine	

Background Information

KIF27 belongs to the kinesin-like protein family and it is a kinesin-4 motor with key roles in cytoskeletal function and ciliogenesis. KIF27 has a conserved function in microtubule organization which can influence microtubule dynamics. KIF27 is highly expressed in ciliated cells, such as olfactory sensory neurons, suggesting to be indispensable in the development and function of motile cilia. Unlike other family members, KIF27 is a slow motor due to its low phosphatase activity. (PMID: 29351996, 29450149, 21746835)

Storage

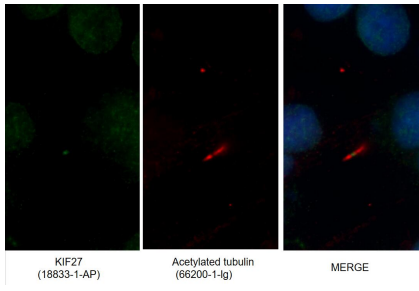
Storage:
Store at -20°C. Stable for one year after shipment.
Storage Buffer:
PBS with 0.02% sodium azide and 50% glycerol pH 7.3.
Aliquoting is unnecessary for -20°C storage

*** 20ul sizes contain 0.1% BSA

For technical support and original validation data for this product please contact:
T: 1 (888) 4PTGLAB (1-888-478-4522) (toll free in USA), or 1(312) 455-8498 (outside USA) E: proteintech@ptglab.com W: ptglab.com

This product is exclusively available under Proteintech Group brand and is not available to purchase from any other manufacturer.

Selected Validation Data



Immunofluorescent analysis of MDCK cells using 18833-1-AP (KIF27 antibody) at dilution of 1:50 and Alexa Fluor 488-conjugated AffiniPure Goat Anti-Rabbit IgG(H+L).