

For Research Use Only

TFAP2D Polyclonal antibody

Catalog Number: 18835-1-AP



Basic Information

Catalog Number: 18835-1-AP	GenBank Accession Number: BC166653	Purification Method: Antigen affinity purification
Size: 150ul , Concentration: 800 µg/ml by Nanodrop and 367 µg/ml by Bradford method using BSA as the standard;	GeneID (NCBI): 83741	Recommended Dilutions: WB 1:500-1:1000
Source: Rabbit	Full Name: transcription factor AP-2 delta (activating enhancer binding protein 2 delta)	
Isotype: IgG	Calculated MW: 50 kDa	
	Observed MW: 47-52 kDa	

Applications

Tested Applications: WB,ELISA	Positive Controls: WB : HeLa cells,
Species Specificity: human, mouse, rat	

Background Information

TFAP2D, also named as TFAP2BL1, belongs to the AP-2 family. TFAP2D is a sequence-specific DNA-binding protein that interacts with inducible viral and cellular enhancer elements to regulate transcription of selected genes. AP-2 factors bind to the consensus sequence 5'-GCCNNNGGC-3' and activate genes involved in a large spectrum of important biological functions including proper eye, face, body wall, limb and neural tube development. They also suppress a number of genes including MCAM/MUC18, C/EBP alpha and MYC. It is highly expressed in adult thymus, prostate, small intestine, skeletal muscle, placenta, brain, and testis tissues.

Storage

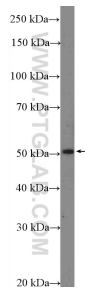
Storage:
Store at -20°C. Stable for one year after shipment.
Storage Buffer:
PBS with 0.02% sodium azide and 50% glycerol pH 7.3.
Aliquoting is unnecessary for -20°C storage

*** 20ul sizes contain 0.1% BSA

For technical support and original validation data for this product please contact:
T: 1 (888) 4PTGLAB (1-888-478-4522) (toll free in USA), or 1(312) 455-8498 (outside USA)
E: proteintech@ptglab.com
W: ptglab.com

This product is exclusively available under Proteintech Group brand and is not available to purchase from any other manufacturer.

Selected Validation Data



HeLa cells were subjected to SDS PAGE followed by western blot with 18835-1-AP (TFAP2D Antibody) at dilution of 1:600 incubated at room temperature for 1.5 hours.