

SORCS1 Polyclonal antibody

Catalog Number: 18839-1-AP

Basic Information

Catalog Number: 18839-1-AP	GenBank Accession Number: BC131597	Purification Method: Antigen affinity purification
Size: 150ul , Concentration: 500 µg/ml by Nanodrop and 233 µg/ml by Bradford method using BSA as the standard;	GeneID (NCBI): 114815	Recommended Dilutions: WB 1:500-1:1000
Source: Rabbit	Full Name: sortilin-related VPS10 domain containing receptor 1	
Isotype: IgG	Calculated MW: 1168 aa, 130 kDa	
	Observed MW: 130 kDa, 60-80 kDa	

Applications

Tested Applications: FC, WB, ELISA	Positive Controls: WB : Y79 cells, HEK-293 cells, mouse brain tissue
Species Specificity: human, mouse	

Background Information

SorCS1 is a 130 kDa type I transmembrane protein, belonging to Vps10p-domain (Vps10p-D) receptor family that comprises an N-terminal Vps10p-D, a leucine-rich domain, a single transmembrane domain, and a short cytoplasmic domain. SorCS1 is synthesized as a proprotein, which is converted to the mature receptor in late Golgi compartments by cleavage of the N-terminal propeptide. Alternative splicing of human SorCS1 results in four isoforms with different cytoplasmic domains and differential expression in tissues. This antibody was generated against the C-terminal region of human SorCS1 and recognizes various forms of SorCS1. Multiple bands around 100-130 kDa as well as 60-80 kDa have been detected in Y79 cells by western blot assay.

Storage

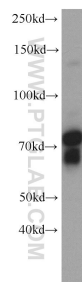
Storage:
Store at -20°C. Stable for one year after shipment.
Storage Buffer:
PBS with 0.02% sodium azide and 50% glycerol pH 7.3.
Aliquoting is unnecessary for -20°C storage

*** 20ul sizes contain 0.1% BSA

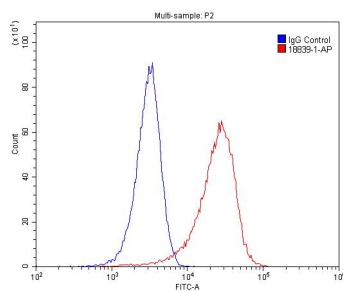
For technical support and original validation data for this product please contact:
T: 1 (888) 4PTGLAB (1-888-478-4522) (toll free in USA), or 1(312) 455-8498 (outside USA)
E: proteintech@ptglab.com
W: ptglab.com

This product is exclusively available under Proteintech Group brand and is not available to purchase from any other manufacturer.

Selected Validation Data



Y79 cells were subjected to SDS PAGE followed by western blot with 18839-1-AP (SORCS1 antibody) at dilution of 1:500 incubated at room temperature for 1.5 hours.



1X10⁶ HeLa cells were stained with 0.2ug SORCS1 antibody (18839-1-AP, red) and control antibody (blue). Alexa Fluor 488-conjugated AffiniPure Goat Anti-Rabbit IgG(H+L) with dilution 1:1500. Cells were fixed with 4% PFA and permeabilized with 0.1% Triton X-100.