

For Research Use Only

# IRF2BP2 Polyclonal antibody

Catalog Number: 18847-1-AP

Featured Product

13 Publications



## Basic Information

### Catalog Number:

18847-1-AP

### Size:

150ul, Concentration: 1000 ug/ml by Nanodrop;

### Source:

Rabbit

### Isotype:

IgG

### GenBank Accession Number:

NM\_182972

### GeneID (NCBI):

359948

### UNIPROT ID:

Q7Z5L9

### Full Name:

interferon regulatory factor 2 binding protein 2

### Calculated MW:

61 kDa

### Observed MW:

61 kDa

### Purification Method:

Antigen affinity purification

### Recommended Dilutions:

WB 1:5000-1:50000

IP 0.5-4.0 ug for 1.0-3.0 mg of total protein lysate

IHC 1:500-1:2000

IF/ICC 1:500-1:2000

## Applications

### Tested Applications:

WB, IHC, IF/ICC, IP, ELISA

### Cited Applications:

WB, IHC, IF, IP, CoIP, ChIP

### Species Specificity:

human

### Cited Species:

human, mouse

**Note-IHC: suggested antigen retrieval with TE buffer pH 9.0; (\*) Alternatively, antigen retrieval may be performed with citrate buffer pH 6.0**

### Positive Controls:

WB : A549 cells, HeLa cells, K-562 cells

IP : K-562 cells,

IHC : human lung squamous cell carcinoma tissue, human liver cancer tissue

IF/ICC : HepG2 cells,

## Background Information

IRF2BP2 belongs to the IRF2BP family. IRF2BP2 acts as a transcriptional repressor and as a transcriptional corepressor in a IRF2-dependent manner. This repression is not mediated at least in part by histone deacetylase activities.

## Notable Publications

Author	Pubmed ID	Journal	Application
Yangyang Yao	31559693	J Cell Mol Med	WB, CoIP
Xue Feng	31538665	Hepatology	
Orhi Barroso-Gomila	34795231	Nat Commun	WB, IF

## Storage

### Storage:

Store at -20°C. Stable for one year after shipment.

### Storage Buffer:

PBS with 0.02% sodium azide and 50% glycerol pH 7.3.

Aliquoting is unnecessary for -20°C storage

\*\*\* 20ul sizes contain 0.1% BSA

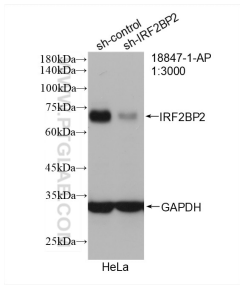
For technical support and original validation data for this product please contact:

T: 1 (888) 4PTGLAB (1-888-478-4522) (toll free in USA), or 1(312) 455-8498 (outside USA)

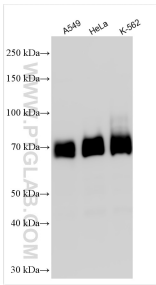
E: [proteintech@ptglab.com](mailto:proteintech@ptglab.com)  
W: [ptglab.com](http://ptglab.com)

This product is exclusively available under Proteintech Group brand and is not available to purchase from any other manufacturer.

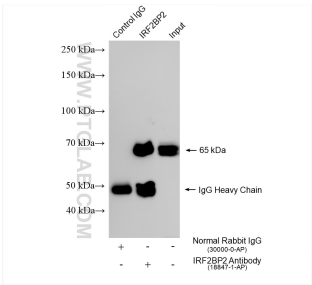
Selected Validation Data



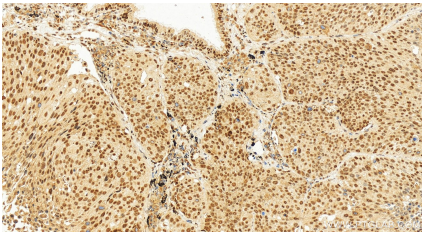
WB result of IRF2BP2 antibody (18847-1-AP; 1:3000; incubated at room temperature for 1.5 hours) with sh-Control and sh-IRF2BP2 transfected HeLa cells.



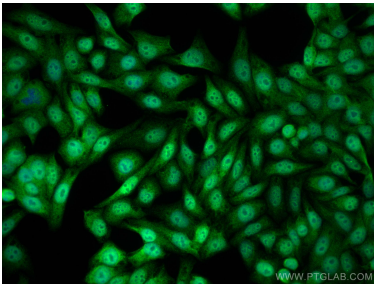
Various lysates were subjected to SDS PAGE followed by western blot with 18847-1-AP (IRF2BP2 antibody) at dilution of 1:15000 incubated at room temperature for 1.5 hours.



IP result of anti-IRF2BP2 (IP:18847-1-AP, 4ug; Detection:18847-1-AP 1:6000) with K-562 cells lysate 1820 ug.



Immunohistochemical analysis of paraffin-embedded human lung squamous cell carcinoma tissue slide using 18847-1-AP (IRF2BP2 antibody) at dilution of 1:1000 (under 20x lens). Heat mediated antigen retrieval with Tris-EDTA buffer (pH 9.0).



Immunofluorescent analysis of (4% PFA) fixed HepG2 cells using IRF2BP2 antibody (18847-1-AP) at dilution of 1:1000 and Multi-rAb CoraLite® Plus 488-Goat Anti-Rabbit Recombinant Secondary Antibody (H+L) (RGAR002).