

For Research Use Only

IRF2BP2 Polyclonal antibody, PBS Only

Catalog Number: 18847-1-PBS

Featured Product



Basic Information

Catalog Number:

18847-1-PBS

Size:

100ug, Concentration: 1 mg/ml by Nanodrop;

Source:

Rabbit

Isotype:

IgG

GenBank Accession Number:

NM_182972

GeneID (NCBI):

359948

UNIPROT ID:

Q7Z5L9

Full Name:

interferon regulatory factor 2 binding protein 2

Calculated MW:

61 kDa

Observed MW:

61 kDa

Purification Method:

Antigen affinity purification

Applications

Tested Applications:

WB, IHC, IF/ICC, IP, Indirect ELISA

Species Specificity:

human

Background Information

IRF2BP2 belongs to the IRF2BP family. IRF2BP2 acts as a transcriptional repressor and as a transcriptional corepressor in a IRF2-dependent manner. This repression is not mediated at least in part by histone deacetylase activities.

Storage

Storage:

Store at -80°C.

Storage Buffer:

PBS only, pH7.3

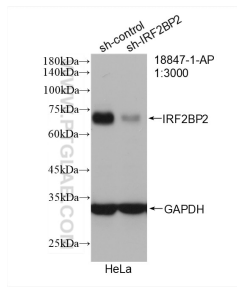
For technical support and original validation data for this product please contact:

T: 1 (888) 4PTGLAB (1-888-478-4522) (toll free in USA), or 1(312) 455-8498 (outside USA)

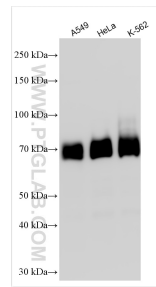
E: proteintech@ptglab.com
W: ptglab.com

This product is exclusively available under Proteintech Group brand and is not available to purchase from any other manufacturer.

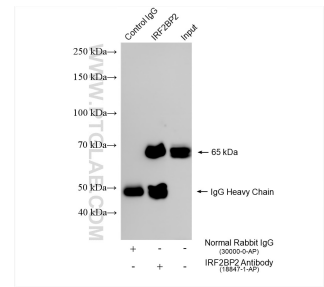
Selected Validation Data



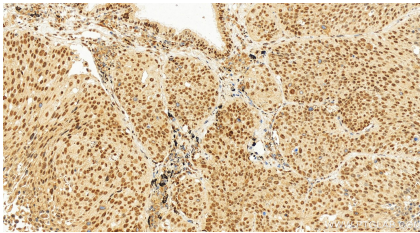
WB result of IRF2BP2 antibody (18847-1-AP; 1:3000; incubated at room temperature for 1.5 hours) with sh-Control and sh-IRF2BP2 transfected HeLa cells. This data was developed using the same antibody clone with 18847-1-PBS in a different storage buffer formulation.



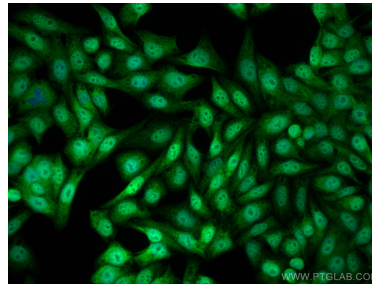
Various lysates were subjected to SDS PAGE followed by western blot with 18847-1-AP (IRF2BP2 antibody) at dilution of 1:15000 incubated at room temperature for 1.5 hours. This data was developed using the same antibody clone with 18847-1-PBS in a different storage buffer formulation.



IP result of anti-IRF2BP2 (IP:18847-1-AP, 4ug; Detection:18847-1-AP 1:6000) with K-562 cells lysate 1820 ug. This data was developed using the same antibody clone with 18847-1-PBS in a different storage buffer formulation.



Immunohistochemical analysis of paraffin-embedded human lung squamous cell carcinoma tissue slide using 18847-1-AP (IRF2BP2 antibody) at dilution of 1:1000 (under 20x lens). Heat mediated antigen retrieval with Tris-EDTA buffer (pH 9.0). This data was developed using the same antibody clone with 18847-1-PBS in a different storage buffer formulation.



Immunofluorescent analysis of (4% PFA) fixed HepG2 cells using IRF2BP2 antibody (18847-1-AP) at dilution of 1:1000 and Multi-rAb Coralite® Plus 488-Goat Anti-Rabbit Recombinant Secondary Antibody (H+L) (RGAR002). This data was developed using the same antibody clone with 18847-1-PBS in a different storage buffer formulation.