

For Research Use Only

ENTPD8 Polyclonal antibody

Catalog Number: 18848-1-AP



Basic Information

Catalog Number:

18848-1-AP

Size:

150ul, Concentration: 133 ug/ml by Bradford method using BSA as the standard;

Source:

Rabbit

Isotype:

IgG

GenBank Accession Number:

NM_198585

GeneID (NCBI):

377841

UNIPROT ID:

Q5MY95

Full Name:

ectonucleoside triphosphate diphosphohydrolase 8

Calculated MW:

54 kDa

Observed MW:

54 kDa

Purification Method:

Antigen affinity purification

Recommended Dilutions:

WB 1:500-1:2000

IHC 1:50-1:500

Applications

Tested Applications:

WB, IHC, ELISA

Species Specificity:

human

Positive Controls:

WB : HepG2 cells,

IHC : human normal stomach,

Note-IHC: suggested antigen retrieval with TE buffer pH 9.0; (*) Alternatively, antigen retrieval may be performed with citrate buffer pH 6.0

Background Information

ENTPD8, also named as UNQ2492 and PRO5779, belongs to the GDA1/CD39 NTPase family. ENTPD8 is a canalicular ectonucleoside NTPDase which responsible for the main hepatic NTPDase activity. Ectonucleoside NTPDases catalyze the hydrolysis of gamma- and beta-phosphate residues of nucleotides, playing a central role in concentration of extracellular nucleotides. Has activity toward ATP, ADP, UTP and UDP, but not toward AMP. ENTPD8 catalyze the reaction :ATP + 2 H₂O = AMP + 2 phosphate.

Storage

Storage:

Store at -20°C. Stable for one year after shipment.

Storage Buffer:

PBS with 0.02% sodium azide and 50% glycerol pH 7.3.

Aliquoting is unnecessary for -20°C storage

***** 20ul sizes contain 0.1% BSA**

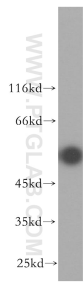
For technical support and original validation data for this product please contact:

T: 1 (888) 4PTGLAB (1-888-478-4522) (toll free in USA), or 1(312) 455-8498 (outside USA)

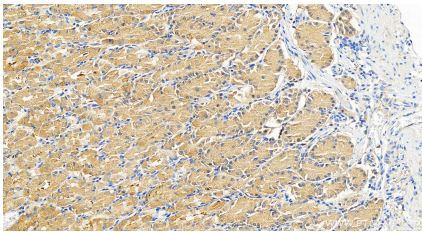
E: proteintech@ptglab.com
W: ptglab.com

This product is exclusively available under Proteintech Group brand and is not available to purchase from any other manufacturer.

Selected Validation Data



HepG2 cells were subjected to SDS PAGE followed by western blot with 18848-1-AP (ENTPD8 antibody) at dilution of 1:500 incubated at room temperature for 1.5 hours.



Immunohistochemical analysis of paraffin-embedded human normal stomach slide using 18848-1-AP (ENTPD8 antibody) at dilution of 1:200 (under 20x lens). Heat mediated antigen retrieval with Tris-EDTA buffer (pH 9.0).