

For Research Use Only

# CER1 Polyclonal antibody

Catalog Number:18879-1-AP



## Basic Information

**Catalog Number:**

18879-1-AP

**Size:**

150ul , Concentration: 270 ug/ml by Nanodrop;

**Source:**

Rabbit

**Isotype:**

IgG

**Immunogen Catalog Number:**

AG12926

**GenBank Accession Number:**

BC069405

**GeneID (NCBI):**

9350

**UNIPROT ID:**

O95813

**Full Name:**

cerberus 1, cysteine knot superfamily, homolog (Xenopus laevis)

**Calculated MW:**

267 aa, 30 kDa

**Observed MW:**

70 kDa

**Purification Method:**

Antigen affinity purification

**Recommended Dilutions:**

WB 1:1000-1:4000

IF-P 1:50-1:500

## Applications

**Tested Applications:**

WB, IF-P, ELISA

**Species Specificity:**

human, mouse, rat

**Positive Controls:**

**WB :** U-251 cells, mouse kidney tissue, rat kidney tissue

**IF-P :** mouse kidney tissue,

## Background Information

CER1 is a cytokine member of the cysteine knot superfamily, characterized by nine conserved cysteines and a cysteine knot region. The cerberus-related cytokines, together with Dan and DRM/Gremlin, represent a group of bone morphogenetic protein (BMP) antagonists that can bind directly to BMPs and inhibit their activity. CER1 can exist as homo- or heterodimers (PMID: 23717584, 9501024).

## Storage

**Storage:**

Store at -20°C. Stable for one year after shipment.

**Storage Buffer:**

PBS with 0.02% sodium azide and 50% glycerol pH 7.3.

Aliquoting is unnecessary for -20°C storage

\*\*\* 20ul sizes contain 0.1% BSA

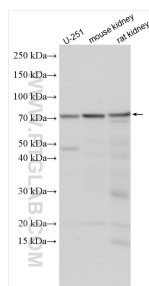
For technical support and original validation data for this product please contact:

T: 1 (888) 4PTGLAB (1-888-478-4522) (toll free in USA), or 1(312) 455-8498 (outside USA)

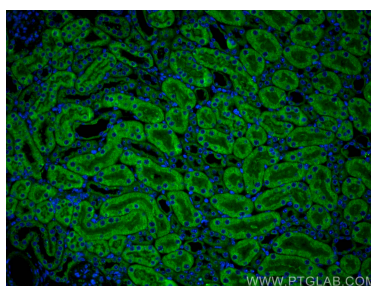
E: [proteintech@ptglab.com](mailto:proteintech@ptglab.com)  
W: [ptglab.com](http://ptglab.com)

This product is exclusively available under Proteintech Group brand and is not available to purchase from any other manufacturer.

## Selected Validation Data



Various lysates were subjected to SDS PAGE followed by western blot with 18879-1-AP (CER1 antibody) at dilution of 1:2000 incubated at room temperature for 1.5 hours.



Immunofluorescent analysis of (4% PFA) fixed mouse kidney tissue using CER1 antibody (18879-1-AP) at dilution of 1:200 and CoraLite® 488-Conjugated AffiniPure Goat Anti-Rabbit IgG(H+L).