

For Research Use Only

# MRPS17 Polyclonal antibody

Catalog Number: 18881-1-AP

14 Publications



## Basic Information

<b>Catalog Number:</b> 18881-1-AP	<b>GenBank Accession Number:</b> BC054031	<b>Purification Method:</b> Antigen affinity purification
<b>Size:</b> 150ul, Concentration: 550 µg/ml by Nanodrop and 273 µg/ml by Bradford method using BSA as the standard;	<b>GeneID (NCBI):</b> 51373	<b>Recommended Dilutions:</b> WB 1:500-1:1000 IHC 1:50-1:500 IF 1:20-1:200
<b>Source:</b> Rabbit	<b>Full Name:</b> mitochondrial ribosomal protein S17	
<b>Isotype:</b> IgG	<b>Calculated MW:</b> 130 aa, 15 kDa	
<b>Immunogen Catalog Number:</b> AG13414	<b>Observed MW:</b> 15 kDa	

## Applications

<b>Tested Applications:</b> IF, IHC, WB, ELISA	<b>Positive Controls:</b> WB : HEK-293 cells, HeLa cells, HepG2 cells IHC : human kidney tissue, IF : HepG2 cells,
<b>Cited Applications:</b> IF, IHC, WB	
<b>Species Specificity:</b> human, mouse, rat	
<b>Cited Species:</b> human, mouse	
<b>Note-IHC: suggested antigen retrieval with TE buffer pH 9.0; (*) Alternatively, antigen retrieval may be performed with citrate buffer pH 6.0</b>	

## Background Information

### Notable Publications

Author	Pubmed ID	Journal	Application
Ilaria Dalla Rosa	24948607	Nucleic Acids Res	WB
Wenjie Zhou	34234855	J Cancer	WB, IHC
Aurelio Reyes	32735630	PLoS Genet	WB

## Storage

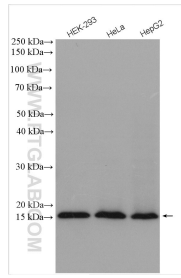
**Storage:**  
Store at -20°C. Stable for one year after shipment.  
**Storage Buffer:**  
PBS with 0.02% sodium azide and 50% glycerol pH 7.3.  
Aliquoting is unnecessary for -20°C storage

\*\*\* 20ul sizes contain 0.1% BSA

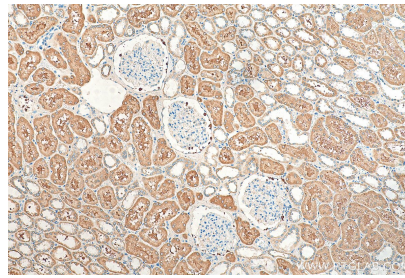
For technical support and original validation data for this product please contact:  
T: 1 (888) 4PTGLAB (1-888-478-4522) (toll free in USA), or 1(312) 455-8498 (outside USA)  
E: proteintech@ptglab.com  
W: ptglab.com

This product is exclusively available under Proteintech Group brand and is not available to purchase from any other manufacturer.

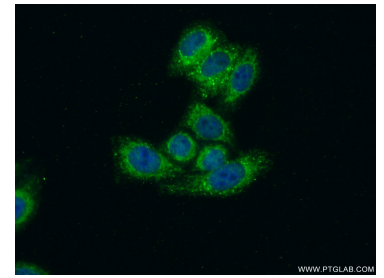
## Selected Validation Data



Various lysates were subjected to SDS PAGE followed by western blot with 18881-1-AP (MRPS17 antibody) at dilution of 1:600 incubated at room temperature for 1.5 hours.



Immunohistochemical analysis of paraffin-embedded human kidney tissue slide using 18881-1-AP (MRPS17 antibody) at dilution of 1:200 (under 10x lens). Heat mediated antigen retrieval with Tris-EDTA buffer (pH 9.0).



Immunofluorescent analysis of (10% Formaldehyde) fixed HepG2 cells using 18881-1-AP (MRPS17 antibody) at dilution of 1:50 and Alexa Fluor 488-conjugated AffiniPure Goat Anti-Rabbit IgG(H+L).