

For Research Use Only

SLC9A3R2 Polyclonal antibody

Catalog Number:18891-1-AP



Basic Information

Catalog Number: 18891-1-AP	GenBank Accession Number: BC106001	Purification Method: Antigen affinity purification
Size: 150ul , Concentration: 500 ug/ml by Nanodrop;	GeneID (NCBI): 9351	Recommended Dilutions: WB 1:500-1:2000 IHC 1:50-1:500
Source: Rabbit	UNIPROT ID: Q15599	
Isotype: IgG	Full Name: solute carrier family 9 (sodium/hydrogen exchanger), member 3 regulator 2	
Immunogen Catalog Number: AG13476	Calculated MW: 337 aa, 37 kDa	
	Observed MW: 45 kDa	

Applications

Tested Applications: WB, IHC, ELISA	Positive Controls:
Species Specificity: human, mouse, rat	WB : HeLa cells, MCF-7 cells, T-47D cells
	IHC : human stomach cancer tissue,

Note-IHC: suggested antigen retrieval with TE buffer pH 9.0; (*) Alternatively, antigen retrieval may be performed with citrate buffer pH 6.0

Background Information

SLC9A3R2, also named as NHERF2, is a member of the Na⁺/H⁺ exchanger regulatory factor (NHERF) family of PDZ scaffolding proteins. SLC9A3R2 is needed for cGMP and carbachol-mediated inhibition as well as LPA and dexamethasone-mediated stimulation of NHE3. NHERF1 and NHERF2 are highly homologous structurally to each other but play different roles in the regulation of Na⁺ and Cl⁻ transport.(PMID: 23612977)

Storage

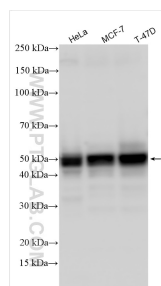
Storage:
Store at -20°C. Stable for one year after shipment.
Storage Buffer:
PBS with 0.02% sodium azide and 50% glycerol pH 7.3.
Aliquoting is unnecessary for -20°C storage

***** 20ul sizes contain 0.1%BSA**

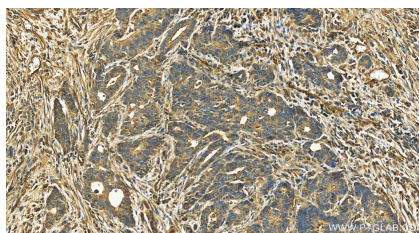
For technical support and original validation data for this product please contact:
T: 1 (888) 4PTGLAB (1-888-478-4522) (toll free in USA), or 1(312) 455-8498 (outside USA)
E: proteintech@ptglab.com
W: ptglab.com

This product is exclusively available under Proteintech Group brand and is not available to purchase from any other manufacturer.

Selected Validation Data



Various lysates were subjected to SDS PAGE followed by western blot with 18891-1-AP (SLC9A3R2 antibody) at dilution of 1:1000 incubated at room temperature for 1.5 hours.



Immunohistochemical analysis of paraffin-embedded stomach cancer slide using 18891-1-AP (SLC9A3R2 antibody) at dilution of 1:200 (under 20x lens). Heat mediated antigen retrieval with Tris-EDTA buffer (pH 9.0).