

For Research Use Only

# PTRF Polyclonal antibody

Catalog Number: 18892-1-AP

Featured Product

28 Publications



## Basic Information

<b>Catalog Number:</b> 18892-1-AP	<b>GenBank Accession Number:</b> BC008849	<b>Purification Method:</b> Antigen affinity purification
<b>Size:</b> 150ul, Concentration: 550 µg/ml by Nanodrop;	<b>GeneID (NCBI):</b> 284119	<b>Recommended Dilutions:</b> WB 1:2000-1:10000 IP 0.5-4.0 ug for IP and 1:1000-1:4000 for WB
<b>Source:</b> Rabbit	<b>Full Name:</b> polymerase I and transcript release factor	<b>IHC 1:20-1:200</b> <b>IF 1:200-1:800</b>
<b>Isotype:</b> IgG	<b>Calculated MW:</b> 43 kDa	
<b>Immunogen Catalog Number:</b> AG13486	<b>Observed MW:</b> 50-55 kDa	

## Applications

**Tested Applications:**  
IF, IHC, IP, WB, ELISA

**Cited Applications:**  
IF, IHC, IP, WB

**Species Specificity:**  
human, mouse, rat

**Cited Species:**  
human, mouse, monkey

**Note-IHC: suggested antigen retrieval with TE buffer pH 9.0; (\*) Alternatively, antigen retrieval may be performed with citrate buffer pH 6.0**

**Positive Controls:**

**WB:** HT-1080 cells, rat heart tissue, mouse heart tissue, mouse lung tissue

**IP:** HT-1080 cells,

**IHC:** human pancreas tissue, mouse brown adipose tissue

**IF:** HepG2 cells,

## Background Information

Polymerase I and transcript release factor (PTRF) is an essential factor in the biogenesis of caveolae, which involve in numerous process, such as signal transduction and membrane and lipid trafficking. PTRF can terminate transcription of RNA Pol I, which involves pausing of transcription by TTF1, and dissociation of the transcription complex, release the complex from the template. The calculated molecular weight of PTRF is 43 kDa, but modified PTRF is about 50-55kDa. (PMID: 11139612)

## Notable Publications

Author	Pubmed ID	Journal	Application
Zhiwei Liao	34476937	ACS Nano	WB
Xiang-Li Bai	29262615	Oncotarget	WB
Xiaotong Cen	36443833	Cell Commun Signal	IP, WB

## Storage

**Storage:**

Store at -20°C. Stable for one year after shipment.

**Storage Buffer:**

PBS with 0.02% sodium azide and 50% glycerol pH 7.3.

Aliquoting is unnecessary for -20°C storage

\*\*\* 20ul sizes contain 0.1% BSA

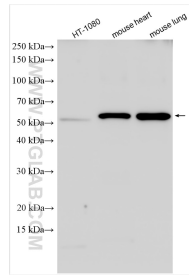
For technical support and original validation data for this product please contact:

T: 1 (888) 4PTGLAB (1-888-478-4522) (toll free in USA), or 1(312) 455-8498 (outside USA)

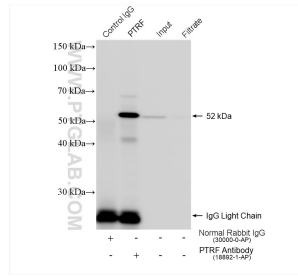
E: proteintech@ptglab.com  
W: ptglab.com

This product is exclusively available under Proteintech Group brand and is not available to purchase from any other manufacturer.

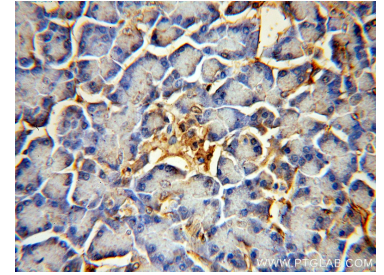
## Selected Validation Data



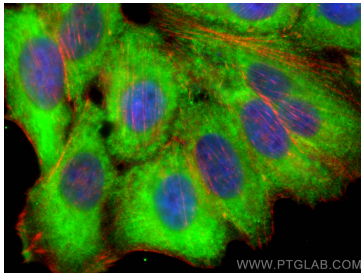
Various lysates were subjected to SDS PAGE followed by western blot with 18892-1-AP (PTRF antibody) at dilution of 1:5000 incubated at room temperature for 1.5 hours.



IP result of anti-PTRF (IP:18892-1-AP, 4 $\mu$ g; Detection:18892-1-AP 1:2000) with HT-1080 cells lysate 3600  $\mu$ g.



Immunohistochemical analysis of paraffin-embedded human pancreas using 18892-1-AP (PTRF antibody) at dilution of 1:100 (under 40x lens).



Immunofluorescent analysis of (-20°C Ethanol) fixed HepG2 cells using PTRF antibody (18892-1-AP) at dilution of 1:400 and CoraLite@488-Conjugated AffiniPure Goat Anti-Rabbit IgG(H+L), CL594-Phalloidin (red).