

For Research Use Only

ADH1C Polyclonal antibody

Catalog Number: 18897-1-AP **3 Publications**



Basic Information

Catalog Number: 18897-1-AP	GenBank Accession Number: BC062476	Purification Method: Antigen affinity purification
Size: 150ul, Concentration: 400 µg/ml by Nanodrop and 280 µg/ml by Bradford method using BSA as the standard;	GeneID (NCBI): 126	Recommended Dilutions: WB 1:2000-1:12000 IP 0.5-4.0 ug for IP and 1:500-1:2000 for WB
Source: Rabbit	Full Name: alcohol dehydrogenase 1C (class I), gamma polypeptide	IHC 1:500-1:2000 IF 1:10-1:100
Isotype: IgG	Calculated MW: 375 aa, 40 kDa	
Immunogen Catalog Number: AG13528	Observed MW: 37-45 kDa	

Applications

Tested Applications: IF, IHC, IP, WB, ELISA	Positive Controls: WB: rat liver tissue, IP: mouse liver tissue, IHC: rat liver tissue, human lung cancer tissue, human colon tissue, human kidney tissue IF: HepG2 cells,
Cited Applications: WB	
Species Specificity: human, mouse, rat	
Cited Species: human, mouse	
Note-IHC: suggested antigen retrieval with TE buffer pH 9.0; (*) Alternatively, antigen retrieval may be performed with citrate buffer pH 6.0	

Background Information

ADH1C (Alcohol dehydrogenase 1C) is also named as ADH3 and belongs to the zinc-containing alcohol dehydrogenase family. It catalyzes the rate-limiting step for ethanol metabolism: the oxidation of alcohol to acetaldehyde. The ADH1C gene is active in intestine and kidney in fetal and early postnatal life, and persists in the stomach and liver in adult life (PMID:4748759).

Notable Publications

Author	Pubmed ID	Journal	Application
Feifeng Song	34293286	Biochem Pharmacol	WB
Yunhui Xu	34265279	Biochem Pharmacol	WB
Xue Chen	33892114	Free Radic Biol Med	WB

Storage

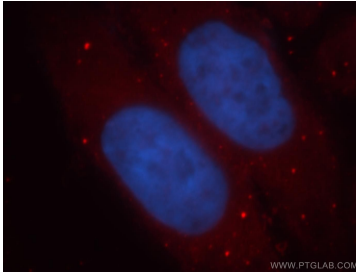
Storage:
Store at -20°C. Stable for one year after shipment.
Storage Buffer:
PBS with 0.02% sodium azide and 50% glycerol pH 7.3.
Aliquoting is unnecessary for -20°C storage

*** 20ul sizes contain 0.1% BSA

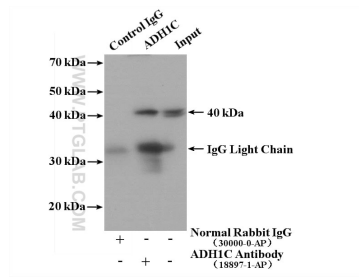
For technical support and original validation data for this product please contact:
T: 1 (888) 4PTGLAB (1-888-478-4522) (toll free in USA), or 1(312) 455-8498 (outside USA)
E: proteintech@ptglab.com
W: ptglab.com

This product is exclusively available under Proteintech Group brand and is not available to purchase from any other manufacturer.

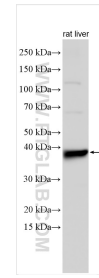
Selected Validation Data



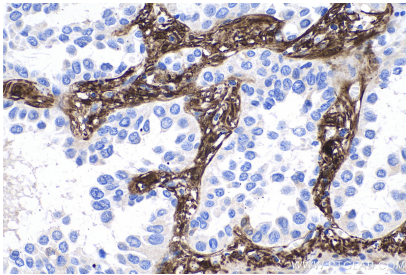
Immunofluorescent analysis of HepG2 cells, using ADH1C antibody 18897-1-AP at 1:25 dilution and Rhodamine-labeled goat anti-rabbit IgG (red). Blue pseudocolor = DAPI (fluorescent DNA dye).



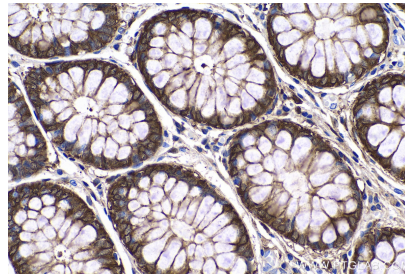
IP result of anti-ADH1C (IP:18897-1-AP, 4ug; Detection:18897-1-AP 1:1000) with mouse liver tissue lysate 4000 ug.



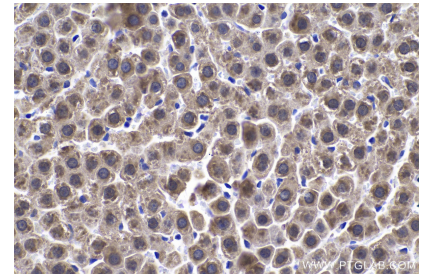
Various lysates were subjected to SDS PAGE followed by western blot with 18897-1-AP (ADH1C antibody) at dilution of 1:6000 incubated at room temperature for 1.5 hours.



Immunohistochemical analysis of paraffin-embedded human lung cancer tissue slide using 18897-1-AP (ADH1C antibody) at dilution of 1:1000 (under 40x lens). Heat mediated antigen retrieval with Tris-EDTA buffer (pH 9.0).



Immunohistochemical analysis of paraffin-embedded human colon tissue slide using 18897-1-AP (ADH1C antibody) at dilution of 1:1000 (under 40x lens). Heat mediated antigen retrieval with Tris-EDTA buffer (pH 9.0).



Immunohistochemical analysis of paraffin-embedded rat liver tissue slide using 18897-1-AP (ADH1C antibody) at dilution of 1:1000 (under 40x lens). Heat mediated antigen retrieval with Tris-EDTA buffer (pH 9.0).