

For Research Use Only

# CEP170/CEP170L Polyclonal antibody

Catalog Number:18899-1-AP

Featured Product

4 Publications



## Basic Information

### Catalog Number:

18899-1-AP

### Size:

150ul , Concentration: 700 ug/ml by Nanodrop and 400 ug/ml by Bradford method using BSA as the standard;

### Source:

Rabbit

### Isotype:

IgG

### Immunogen Catalog Number:

AG13532

### GenBank Accession Number:

BC014590

### GeneID (NCBI):

645455

### Full Name:

centrosomal protein 170kDa-like

### Calculated MW:

170 kDa

### Observed MW:

170-200 kDa

### Purification Method:

Antigen affinity purification

### Recommended Dilutions:

WB 1:1000-1:6000

IF/ICC 1:10-1:100

## Applications

### Tested Applications:

WB, IF/ICC, ELISA

### Cited Applications:

WB, IP, IF

### Species Specificity:

human, mouse, rat

### Cited Species:

human

### Positive Controls:

WB : HeLa cells, mouse testis tissue, rat testis tissue

IF/ICC : Hela cells,

## Background Information

CEP170, also named as FAM68A, KAB and KIAA0470, is a fork head-associated (FHA) domain protein. CEP170L is a part of CEP170. The gene CEP170 has some isoforms with MW 170-200 kDa, 160 kDa and some fragments 30-40 kDa, ~75 kDa.

## Notable Publications

Author	Pubmed ID	Journal	Application
Xiaozhu Tang	34620840	Signal Transduct Target Ther	WB,IP
Chunyan Gu	34090465	Mol Cancer	WB,IF,IP
Xiaqing Zhang	38590928	Cell Insight	WB,IP

## Storage

### Storage:

Store at -20°C. Stable for one year after shipment.

### Storage Buffer:

PBS with 0.02% sodium azide and 50% glycerol pH 7.3.

Aliquoting is unnecessary for -20°C storage

\*\*\* 20ul sizes contain 0.1% BSA

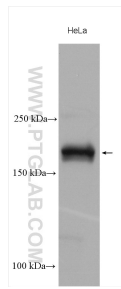
For technical support and original validation data for this product please contact:

T: 1 (888) 4PTGLAB (1-888-478-4522) (toll free in USA), or 1(312) 455-8498 (outside USA)

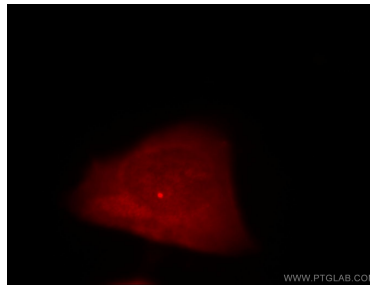
E: [proteintech@ptglab.com](mailto:proteintech@ptglab.com)  
W: [ptglab.com](http://ptglab.com)

This product is exclusively available under Proteintech Group brand and is not available to purchase from any other manufacturer.

## Selected Validation Data



HeLa cells were subjected to SDS PAGE followed by western blot with 18899-1-AP (CEP170/CEP170L antibody) at dilution of 1:3000 incubated at room temperature for 1.5 hours.



Immunofluorescent analysis of HeLa cells, using CEP170L antibody 18899-1-AP at 1:25 dilution and Rhodamine-labeled goat anti-rabbit IgG (red).