

For Research Use Only

# SOX13 Polyclonal antibody, PBS Only

Catalog Number:18902-1-PBS

Featured Product



## Basic Information

**Catalog Number:**

18902-1-PBS

**Size:**

100ug , Concentration: 1 mg/ml by Nanodrop;

**Source:**

Rabbit

**Isotype:**

IgG

**Immunogen Catalog Number:**

AG13537

**GenBank Accession Number:**

BC106038

**GeneID (NCBI):**

9580

**UNIPROT ID:**

Q9UN79

**Full Name:**

SRY (sex determining region Y)-box 13

**Calculated MW:**

622 aa, 69 kDa

**Observed MW:**

69 kDa

**Purification Method:**

Antigen affinity purification

## Applications

**Tested Applications:**

WB, IP, Indirect ELISA

**Species Specificity:**

human

## Background Information

SRY-BOX 13(SOX13), identified a sequence homologous more than 60% to the SRY HMG box ,with a centrally located HMG box and an N-terminal leucine zipper motif with a neighboring glutamine stretch called a Q box. SOX13 binds to the consensus HMG-box motif. It's an IDDM-specific human autoantigen, and a gamma-delta-specific gene in the immune system. It can modulates Wnt/TCF activity. This is a rabbit polyclonal raised against part of N-terminal chain of SOX13 of human origin.

## Storage

**Storage:**

Store at -80°C.

**Storage Buffer:**

PBS Only

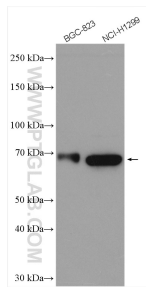
For technical support and original validation data for this product please contact:

T: 1 (888) 4PTGLAB (1-888-478-4522) (toll free in USA), or 1(312) 455-8498 (outside USA)

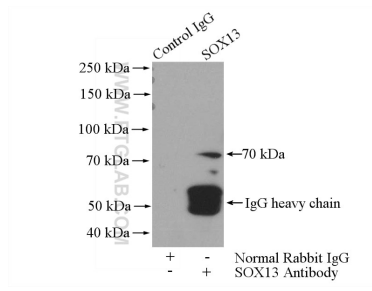
E: [proteintech@ptglab.com](mailto:proteintech@ptglab.com)  
W: [ptglab.com](http://ptglab.com)

**This product is exclusively available under Proteintech Group brand and is not available to purchase from any other manufacturer.**

## Selected Validation Data



Various lysates were subjected to SDS PAGE followed by western blot with 18902-1-AP (SOX13 antibody) at dilution of 1:1500 incubated at room temperature for 1.5 hours. This data was developed using the same antibody clone with 18902-1-PBS in a different storage buffer formulation.



IP result of anti-SOX13 (IP:18902-1-AP, 4ug; Detection:18902-1-AP 1:500) with SH-SY5Y cells lysate 1200ug. This data was developed using the same antibody clone with 18902-1-PBS in a different storage buffer formulation.