

For Research Use Only

# NDC80 Polyclonal antibody

Catalog Number: 18932-1-AP

6 Publications



## Basic Information

### Catalog Number:

18932-1-AP

### Size:

150ul, Concentration: 300 ug/ml by Nanodrop and 200 ug/ml by Bradford method using BSA as the standard;

### Source:

Rabbit

### Isotype:

IgG

### Immunogen Catalog Number:

AG8065

### GenBank Accession Number:

BC035617

### GeneID (NCBI):

10403

### UNIPROT ID:

O14777

### Full Name:

NDC80 homolog, kinetochore complex component (S. cerevisiae)

### Calculated MW:

74 kDa

### Observed MW:

76 kDa

### Purification Method:

Antigen affinity purification

### Recommended Dilutions:

WB 1:1000-1:4000

IP 0.5-4.0 ug for 1.0-3.0 mg of total protein lysate

IHC 1:20-1:200

IF/ICC 1:50-1:500

## Applications

### Tested Applications:

WB, IHC, IF/ICC, IP, ELISA

### Cited Applications:

WB, IHC, IF, IP

### Species Specificity:

human, mouse, rat

### Cited Species:

human

**Note-IHC: suggested antigen retrieval with TE buffer pH 9.0; (\*) Alternatively, antigen retrieval may be performed with citrate buffer pH 6.0**

### Positive Controls:

WB : HeLa cells, A2780 cells, human spleen tissue, Jurkat cells, mouse testis tissue

IP : A2780 cells,

IHC : human brain tissue,

IF/ICC : A549 cells,

## Notable Publications

Author	Pubmed ID	Journal	Application
Yanwei Liu	26468983	Oncotarget	WB
Yu-Chia Chen	29606879	Onco Targets Ther	WB
Xi Chen	36105209	Front Pharmacol	WB,IHC

## Storage

### Storage:

Store at -20°C. Stable for one year after shipment.

### Storage Buffer:

PBS with 0.02% sodium azide and 50% glycerol pH 7.3.

Aliquoting is unnecessary for -20°C storage

\*\*\* 20ul sizes contain 0.1% BSA

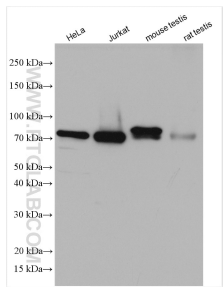
For technical support and original validation data for this product please contact:

T: 1 (888) 4PTGLAB (1-888-478-4522) (toll free in USA), or 1(312) 455-8498 (outside USA)

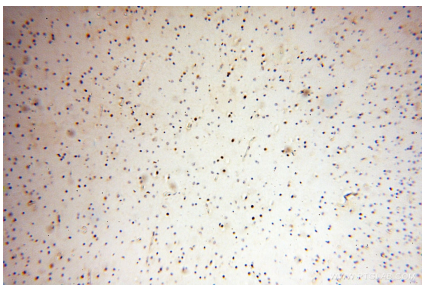
E: [proteintech@ptglab.com](mailto:proteintech@ptglab.com)  
W: [ptglab.com](http://ptglab.com)

This product is exclusively available under Proteintech Group brand and is not available to purchase from any other manufacturer.

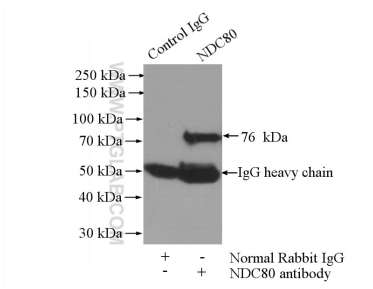
Selected Validation Data



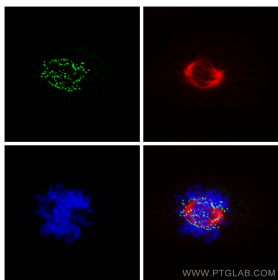
Various lysates were subjected to SDS PAGE followed by western blot with 18932-1-AP (NDC80 antibody) at dilution of 1:2000 incubated at room temperature for 1.5 hours.



Immunohistochemical analysis of paraffin-embedded human brain using 18932-1-AP (NDC80 antibody) at dilution of 1:100 (under 10x lens).



IP result of anti-NDC80 (IP:18932-1-AP, 4ug; Detection:18932-1-AP 1:500) with A2780 cells lysate 960ug.



Immunofluorescent analysis of (4% PFA) fixed A549 cells using NDC80 antibody (18932-1-AP) at dilution of 1:200 and Coralite® 488-Conjugated Goat Anti-Rabbit IgG(H+L) (SA00013-2), Alpha Tubulin antibody (66031-1-Ig, Clone: 1E4C11, red).