

For Research Use Only

BMP2 Polyclonal antibody

Catalog Number: 18933-1-AP

Featured Product

59 Publications



Basic Information

Catalog Number:

18933-1-AP

Size:

150ul, Concentration: 600 µg/ml by Nanodrop and 253 µg/ml by Bradford method using BSA as the standard;

Source:

Rabbit

Isotype:

IgG

Immunogen Catalog Number:

AG13501

GenBank Accession Number:

BC069214

GeneID (NCBI):

650

UNIPROT ID:

P12643

Full Name:

bone morphogenetic protein 2

Calculated MW:

396 aa, 44 kDa

Purification Method:

Antigen affinity purification

Recommended Dilutions:

WB 1:500-1:1000

Applications

Tested Applications:

WB, ELISA

Cited Applications:

WB, IHC, IF

Species Specificity:

human

Cited Species:

human, mouse, rat, hamster, sheep

Positive Controls:

WB : HeLa cells,

Background Information

Bone morphogenetic protein-2 (BMP-2) is a member of the transforming growth factor-beta (TGFB) superfamily. BMP2 is synthesized as a 60 kDa precursor that is processed in the secretory pathway to a small 18 kDa monomer; 2 monomers then associate to form the active 30 kDa homodimer, which binds to its receptor. There is also a 40-45 kDa form of BMP2, as an amino-terminal propeptide. BMP2 can induce bone formation and regeneration during early embryonic development. It is involved in the hedgehog pathway, TGF beta signaling pathway, and cytokine-cytokine receptor interaction.

Notable Publications

Author	Pubmed ID	Journal	Application
Guangchun Dai	33102476	Front Cell Dev Biol	WB,IHC
Hong Liu	28944996	J Cell Mol Med	WB
Chuanhui Yin	32949110	Birth Defects Res	IHC

Storage

Storage:

Store at -20°C. Stable for one year after shipment.

Storage Buffer:

PBS with 0.02% sodium azide and 50% glycerol pH 7.3.

Aliquoting is unnecessary for -20°C storage

*** 20ul sizes contain 0.1% BSA

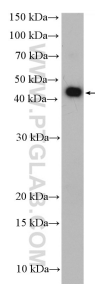
For technical support and original validation data for this product please contact:

T: 1 (888) 4PTGLAB (1-888-478-4522) (toll free in USA), or 1(312) 455-8498 (outside USA)

E: proteintech@ptglab.com
W: ptglab.com

This product is exclusively available under Proteintech Group brand and is not available to purchase from any other manufacturer.

Selected Validation Data



HeLa cells were subjected to SDS PAGE followed by western blot with 18933-1-AP (BMP2 antibody) at dilution of 1:600 incubated at room temperature for 1.5 hours.