

For Research Use Only

# CRMP4 Polyclonal antibody

Catalog Number: 18969-1-AP **2 Publications**



## Basic Information

<b>Catalog Number:</b> 18969-1-AP	<b>GenBank Accession Number:</b> BC039006	<b>Purification Method:</b> Antigen affinity purification
<b>Size:</b> 150ul , Concentration: 600 µg/ml by Nanodrop and 333 µg/ml by Bradford method using BSA as the standard;	<b>GeneID (NCBI):</b> 1809	<b>Recommended Dilutions:</b> WB 1:500-1:3000 IP 0.5-4.0 ug for IP and 1:500-1:1000 for WB
<b>Source:</b> Rabbit	<b>Full Name:</b> dihydropyrimidinase-like 3	<b>IHC 1:100-1:400</b> <b>IF 1:10-1:100</b>
<b>Isotype:</b> IgG	<b>Calculated MW:</b> 570 aa, 62 kDa	
<b>Immunogen Catalog Number:</b> AG5299	<b>Observed MW:</b> 60-70 kDa	

## Applications

<b>Tested Applications:</b> IF, IHC, IP, WB, ELISA	<b>Positive Controls:</b> WB : SH-SY5Y cells, Jurkat cells, mouse cerebellum tissue, mouse thymus tissue
<b>Cited Applications:</b> IP, WB	<b>IP :</b> SH-SY5Y cells,
<b>Species Specificity:</b> human, mouse, rat	<b>IHC :</b> human liver cancer tissue, human kidney tissue
<b>Cited Species:</b> mouse, rat	<b>IF :</b> HepG2 cells,

**Note-IHC: suggested antigen retrieval with TE buffer pH 9.0; (\*) Alternatively, antigen retrieval may be performed with citrate buffer pH 6.0**

## Background Information

DPYSL3(Dihydropyrimidinase-related protein 3) is also named as CRMP4, DRP3, ULIP, ULIP1 and belongs to the hydantoinase/dihydropyrimidinase subfamily. DPYSL3 is a developmentally regulated protein, strongly expressed in early embryonic post-mitotic neural cells, reaching a peak of expression around the first post-natal week. In the adult brain, DPYSL3 is present mainly in regions that retain neurogenesis. DPYSL3 protein is also found in synaptic sites at the adult neuromuscular junction where it may be involved in the maintenance of neuronal stability(PMID: 16135096). It has 2 isoforms produced by alternative splicing.

## Notable Publications

Author	Pubmed ID	Journal	Application
Jeremy A Whitson	28951044	Free Radic Biol Med	WB
Kazuhiro Tokuda	26071357	Biochem Biophys Res Commun	WB, IP

## Storage

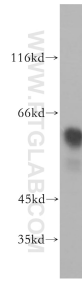
**Storage:**  
Store at -20°C. Stable for one year after shipment.  
**Storage Buffer:**  
PBS with 0.02% sodium azide and 50% glycerol pH 7.3.  
Aliquoting is unnecessary for -20°C storage

**\*\*\* 20ul sizes contain 0.1% BSA**

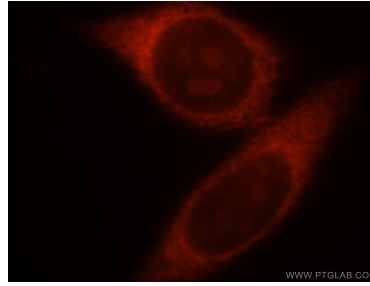
For technical support and original validation data for this product please contact:  
T: 1 (888) 4PTGLAB (1-888-478-4522) (toll free in USA), or 1(312) 455-8498 (outside USA) E: proteintech@ptglab.com W: ptglab.com

**This product is exclusively available under Proteintech Group brand and is not available to purchase from any other manufacturer.**

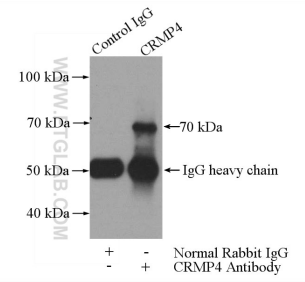
## Selected Validation Data



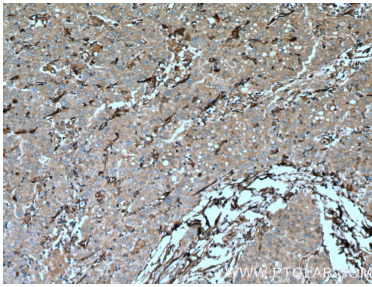
SH-SY5Y cells were subjected to SDS PAGE followed by western blot with 18969-1-AP (CRMP4 antibody) at dilution of 1:800 incubated at room temperature for 1.5 hours.



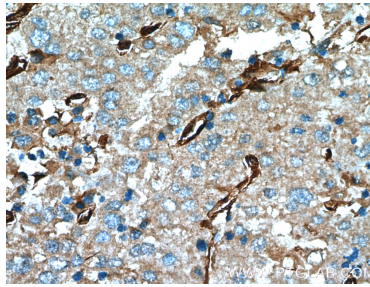
Immunofluorescent analysis of HepG2 cells, using DPYSL3 antibody 18969-1-AP at 1:25 dilution and Rhodamine-labeled goat anti-rabbit IgG (red).



IP Result of anti-CRMP4 (IP:18969-1-AP, 3ug; Detection:18969-1-AP 1:700) with SH-SY5Y cells lysate 3000ug.



Immunohistochemical analysis of paraffin-embedded human liver cancer tissue slide using 18969-1-AP (CRMP4 antibody at dilution of 1:200 (under 10x lens). Heat mediated antigen retrieval with Tris-EDTA buffer (pH 9.0).



Immunohistochemical analysis of paraffin-embedded human liver cancer tissue slide using 18969-1-AP (CRMP4 antibody at dilution of 1:200 (under 40x lens). Heat mediated antigen retrieval with Tris-EDTA buffer (pH 9.0).