

For Research Use Only

NKCC2 Polyclonal antibody

Catalog Number: 18970-1-AP

Featured Product

30 Publications



Basic Information

Catalog Number:

18970-1-AP

Size:

150ul, Concentration: 350 ug/ml by Nanodrop and 233 ug/ml by Bradford method using BSA as the standard;

Source:

Rabbit

Isotype:

IgG

Immunogen Catalog Number:

AG5325

GenBank Accession Number:

BC040138

GeneID (NCBI):

6557

UNIPROT ID:

Q13621

Full Name:

solute carrier family 12 (sodium/potassium/chloride transporters), member 1

Calculated MW:

121 kDa

Observed MW:

135 kDa

Purification Method:

Antigen affinity purification

Recommended Dilutions:

WB 1:500-1:2000

IHC 1:2000-1:8000

IF 1:20-1:200

Applications

Tested Applications:

WB, IF, IHC, ELISA

Cited Applications:

WB, IHC, IF

Species Specificity:

human, mouse, rat

Cited Species:

human, mouse, rat

Positive Controls:

WB: HEK-293 cells, 37°C incubated mouse kidney tissue

IHC: human kidney tissue, mouse kidney tissue, rat kidney tissue

IF: mouse Embryonic kidney tissue,

Note-IHC: suggested antigen retrieval with TE buffer pH 9.0; (*) Alternatively, antigen retrieval may be performed with citrate buffer pH 6.0

Notable Publications

Author	Pubmed ID	Journal	Application
Eunah Chung	27633993	Development	IF
An-Jing Chen	31515730	Sci China Life Sci	IF
Jessica M Vanslambrouck	31492807	J Am Soc Nephrol	IF

Storage

Storage:

Store at -20°C. Stable for one year after shipment.

Storage Buffer:

PBS with 0.02% sodium azide and 50% glycerol pH 7.3.

Aliquoting is unnecessary for -20°C storage

*** 20ul sizes contain 0.1% BSA

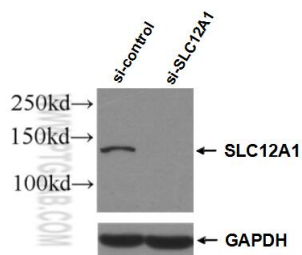
For technical support and original validation data for this product please contact:

T: 1 (888) 4PTGLAB (1-888-478-4522) (toll free in USA), or 1(312) 455-8498 (outside USA)

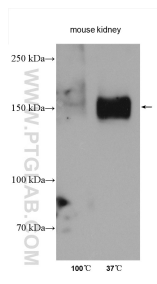
E: proteintech@ptglab.com
W: ptglab.com

This product is exclusively available under Proteintech Group brand and is not available to purchase from any other manufacturer.

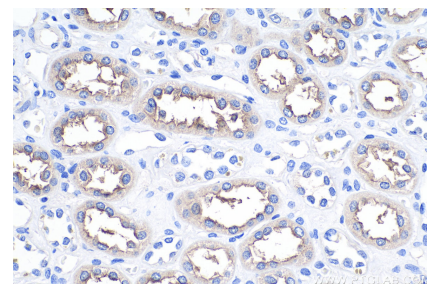
Selected Validation Data



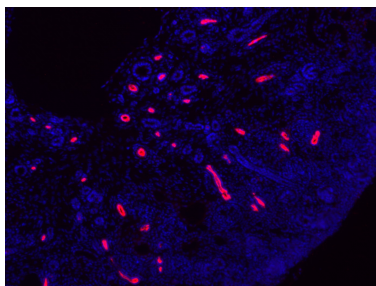
WB result of NKCC2 antibody (18970-1-AP; 1:1000; incubated at room temperature for 1.5 hours) with sh-Control and sh-NKCC2 transfected HEK-293 cells.



Boiled or non-boiled lysates of mouse kidney were subjected to SDS PAGE followed by western blot with 18970-1-AP (NKCC2 antibody) at dilution of 1:3000 incubated at room temperature for 1.5 hours.



Immunohistochemical analysis of paraffin-embedded human kidney tissue slide using 18970-1-AP (NKCC2 antibody) at dilution of 1:4000 (under 40x lens). Heat mediated antigen retrieval with Tris-EDTA buffer (pH 9.0).



IF result of SLC12A1 antibody (18970-1-AP, 1:900) with mouse Embryonic kidneys from E16.5 (fixed with 4% PFA at 4C for 30 min, cryosections 5% goat serum/PBST was used for blocking and antibody incubation). Red: anti-rabbit Alexa555, Blue: Hoechst.