

For Research Use Only

# TULP1 Polyclonal antibody

Catalog Number: 18971-1-AP



## Basic Information

|  |  |  |
|--|--|--|
| <b>Catalog Number:</b><br>18971-1-AP   | <b>GenBank Accession Number:</b><br>BC032714 | <b>Purification Method:</b><br>Antigen affinity purification       |
| <b>Size:</b><br>150ul , Concentration: 450 µg/ml by Nanodrop and 220 µg/ml by Bradford method using BSA as the standard; | <b>GeneID (NCBI):</b><br>7287                | <b>Recommended Dilutions:</b><br>WB 1:500-1:2000<br>IHC 1:20-1:200 |
| <b>Source:</b><br>Rabbit   | <b>Full Name:</b><br>tubby like protein 1    |  |
| <b>Isotype:</b><br>IgG   | <b>Calculated MW:</b><br>489 aa, 55 kDa      |  |
| <b>Immunogen Catalog Number:</b><br>AG5598   | <b>Observed MW:</b><br>70 kDa                |  |

## Applications

|  |  |
|--|--|
| <b>Tested Applications:</b><br>IHC, WB, ELISA  | <b>Positive Controls:</b>                                      |
| <b>Species Specificity:</b><br>human, mouse, rat   | <b>WB :</b> Y79 cells, human brain tissue, mouse retina tissue |
| <b>Note-IHC: suggested antigen retrieval with TE buffer pH 9.0; (*) Alternatively, antigen retrieval may be performed with citrate buffer pH 6.0</b> | <b>IHC :</b> human eye tissue,                                 |

## Background Information

### Storage

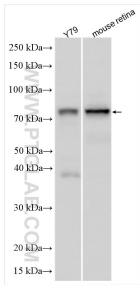
**Storage:**  
Store at -20°C. Stable for one year after shipment.  
**Storage Buffer:**  
PBS with 0.02% sodium azide and 50% glycerol pH 7.3.  
Aliquoting is unnecessary for -20°C storage

\*\*\* 20ul sizes contain 0.1% BSA

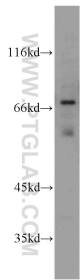
For technical support and original validation data for this product please contact:  
T: 1 (888) 4PTGLAB (1-888-478-4522) (toll free in USA), or 1(312) 455-8498 (outside USA)  
E: [proteintech@ptglab.com](mailto:proteintech@ptglab.com)  
W: [ptglab.com](http://ptglab.com)

This product is exclusively available under Proteintech Group brand and is not available to purchase from any other manufacturer.

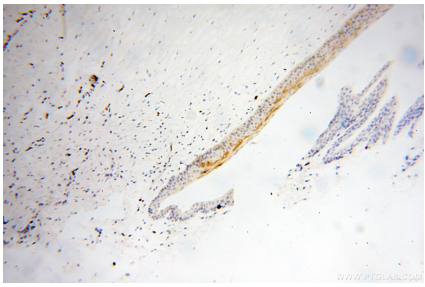
Selected Validation Data



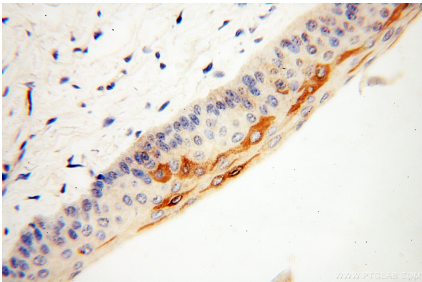
Various lysates were subjected to SDS PAGE followed by western blot with 18971-1-AP (TULP1 antibody) at dilution of 1:1000 incubated at room temperature for 1.5 hours.



human brain tissue were subjected to SDS PAGE followed by western blot with 18971-1-AP (TULP1 antibody) at dilution of 1:500 incubated at room temperature for 1.5 hours.



Immunohistochemical analysis of paraffin-embedded human eye using 18971-1-AP (TULP1 antibody) at dilution of 1:50 (under 10x lens).



Immunohistochemical analysis of paraffin-embedded human eye using 18971-1-AP (TULP1 antibody) at dilution of 1:50 (under 40x lens).