

For Research Use Only

# EGFR-Specific Polyclonal antibody

Catalog Number:18986-1-AP

Featured Product

159 Publications



## Basic Information

### Catalog Number:

18986-1-AP

### Size:

150ul , Concentration: 800 ug/ml by Nanodrop;

### Source:

Rabbit

### Isotype:

IgG

### GenBank Accession Number:

NM\_005228

### GeneID (NCBI):

1956

### UNIPROT ID:

P00533

### Full Name:

epidermal growth factor receptor (erythroblastic leukemia viral (v-erb-b) oncogene homolog, avian)

### Calculated MW:

134 kDa

### Observed MW:

145-165 kDa

### Purification Method:

Antigen affinity purification

### Recommended Dilutions:

WB 1:1000-1:6000

IP 0.5-4.0 ug for 1.0-3.0 mg of total protein lysate

## Applications

### Tested Applications:

WB, IP, ELISA

### Cited Applications:

WB, IHC, IF, IP, CoIP, ChIP

### Species Specificity:

human

### Cited Species:

human, mouse, rat, pig, sheep

### Positive Controls:

WB : HepG2 cells, MCF-7 cells, A431 cells, HeLa/RPE1 cells, NCI-H1299 cells, HeLa cells, A549 cells, L02 cells, NCL-H1299 cells

IP : MCF-7 cells,

## Background Information

ERBB1, also named as EGFR, is a receptor for EGF, but also for other members of the EGF family, as TGF- $\alpha$ , amphiregulin, betacellulin, heparin-binding EGF-like growth factor, GP30 and vaccinia virus growth factor. ERBB1 is involved in the control of cell growth and differentiation. Phosphorylates MUC1 in breast cancer cells and increases the interaction of MUC1 with C-SRC and CTNNB1/beta-catenin. Isoform 2/truncated isoform of ERBB1 may act as an antagonist. EGFR is associated with lung cancer. The antibody is specific to isoform1.

## Notable Publications

Author	Pubmed ID	Journal	Application
Haile Zhao	34658851	Front Pharmacol	WB,IP
Taiwei Wang	36169181	Oncol Rep	WB
Jing Cai	31826234	Carcinogenesis	WB,IHC,IF

## Storage

### Storage:

Store at -20°C. Stable for one year after shipment.

### Storage Buffer:

PBS with 0.02% sodium azide and 50% glycerol, pH7.3

Aliquoting is unnecessary for -20°C storage

\*\*\* 20ul sizes contain 0.1% BSA

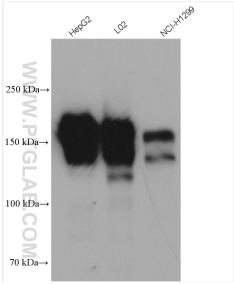
For technical support and original validation data for this product please contact:

T: 1 (888) 4PTGLAB (1-888-478-4522) (toll free in USA), or 1(312) 455-8498 (outside USA)

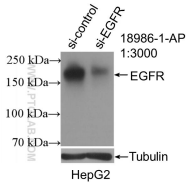
E: [proteintech@ptglab.com](mailto:proteintech@ptglab.com)  
W: [ptglab.com](http://ptglab.com)

This product is exclusively available under Proteintech Group brand and is not available to purchase from any other manufacturer.

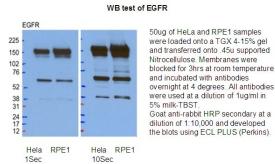
Selected Validation Data



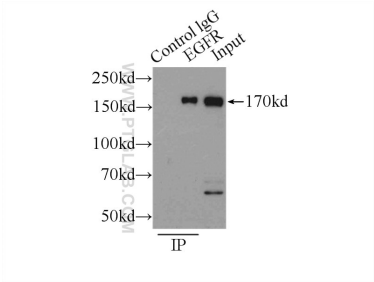
Various lysates were subjected to SDS PAGE followed by western blot with 18986-1-AP (EGFR-Specific antibody) at dilution of 1:3000 incubated at room temperature for 1.5 hours.



WB result of EGFR-Specific antibody (18986-1-AP; 1:3000; incubated at room temperature for 1.5 hours) with sh-Control and sh-EGFR-Specific transfected HepG2 cells.



WB result of anti-EGFR (18986-1-AP) in HeLa and RPE1 cell by Dr.Kodani, Andrew.



IP result of anti-EGFR-Specific (IP:18986-1-AP, 3ug; Detection:18986-1-AP 1:500) with MCF-7 cells lysate 2500ug.