

For Research Use Only

DOCK9 Polyclonal antibody

Catalog Number: 18987-1-AP



Basic Information

Catalog Number: 18987-1-AP	GenBank Accession Number: NM_015296	Purification Method: Antigen affinity purification
Size: 150ul , Concentration: 400 µg/ml by Nanodrop and 333 µg/ml by Bradford method using BSA as the standard;	GeneID (NCBI): 23348	Recommended Dilutions: WB 1:500-1:1000 IP 0.5-4.0 ug for IP and 1:500-1:1000 for WB
Source: Rabbit	Full Name: dedicator of cytokinesis 9	IHC 1:50-1:500 IF 1:50-1:500
Isotype: IgG	Calculated MW: 239 kDa	
	Observed MW: 200-236 kDa	

Applications

Tested Applications:
IF, IHC, IP, WB, ELISA

Species Specificity:
human, mouse

Note-IHC: suggested antigen retrieval with TE buffer pH 9.0; (*) Alternatively, antigen retrieval may be performed with citrate buffer pH 6.0

Positive Controls:

WB: A549 cells, human brain tissue, mouse brain tissue, human heart tissue, human placenta tissue, HeLa cells, MCF-7 cells

IP: mouse brain tissue,

IHC: human kidney tissue, human heart tissue

IF: HeLa cells,

Background Information

DOCK9 is a guanine nucleotide exchange factor (GEF) that activates CDC42 by exchanging bound GDP for free GTP. Its overexpression induces filopodia formation.

Storage

Storage:

Store at -20°C. Stable for one year after shipment.

Storage Buffer:

PBS with 0.02% sodium azide and 50% glycerol pH 7.3.

Aliquoting is unnecessary for -20°C storage

*** 20ul sizes contain 0.1% BSA

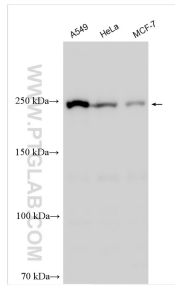
For technical support and original validation data for this product please contact:

T: 1 (888) 4PTGLAB (1-888-478-4522) (toll free in USA), or 1(312) 455-8498 (outside USA)

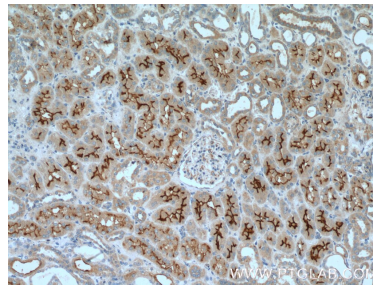
E: proteintech@ptglab.com
W: ptglab.com

This product is exclusively available under Proteintech Group brand and is not available to purchase from any other manufacturer.

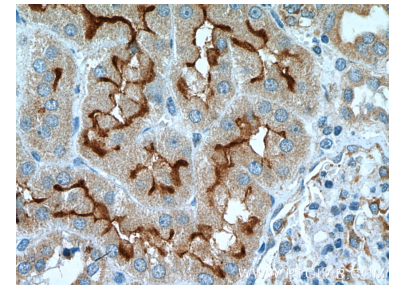
Selected Validation Data



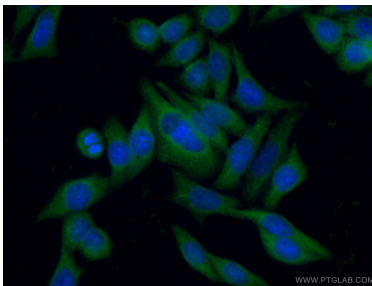
Various lysates were subjected to SDS PAGE followed by western blot with 18987-1-AP (DOCK9 antibody) at dilution of 1:500 incubated at room temperature for 1.5 hours.



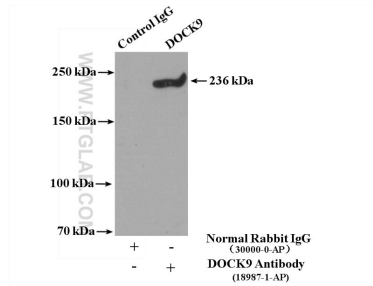
Immunohistochemical analysis of paraffin-embedded human kidney tissue slide using 18987-1-AP (DOCK9 Antibody) at dilution of 1:200 (under 10x lens).



Immunohistochemical analysis of paraffin-embedded human kidney tissue slide using 18987-1-AP (DOCK9 Antibody) at dilution of 1:200 (under 40x lens).



Immunofluorescent analysis of (-20°C Ethanol) fixed HeLa cells using 18987-1-AP (DOCK9 antibody) at dilution of 1:50 and Alexa Fluor 488-conjugated AffiniPure Goat Anti-Rabbit IgG(H+L).



IP Result of anti-DOCK9 (IP:18987-1-AP, 4ug; Detection:18987-1-AP 1:800) with mouse brain tissue lysate 4000ug.