

HAUS3 Polyclonal antibody

Catalog Number: 18991-1-AP

1 Publications

Basic Information

Catalog Number: 18991-1-AP	GenBank Accession Number: NM_024511	Purification Method: Antigen affinity purification
Size: 150ul , Concentration: 200 µg/ml by Nanodrop and 173 µg/ml by Bradford method using BSA as the standard;	GeneID (NCBI): 79441	Recommended Dilutions: WB 1:500-1:2000 IHC 1:20-1:200 IF 1:20-1:200
Source: Rabbit	Full Name: chromosome 4 open reading frame 15	
Isotype: IgG	Calculated MW: 70 kDa	
	Observed MW: 62-65 kDa	

Applications

Tested Applications: IF, IHC, WB, ELISA	Positive Controls: WB : HepG2 cells, HeLa cells IHC : human liver cancer tissue, IF : HepG2 cells,
Cited Applications: WB	
Species Specificity: human, mouse, rat	
Cited Species: human	
Note-IHC: suggested antigen retrieval with TE buffer pH 9.0; (*) Alternatively, antigen retrieval may be performed with citrate buffer pH 6.0	

Background Information

HAUS3, also named as C4orf15, belongs to the HAUS3 family. It is Required for mitotic centrosome and spindle integrity. HAUS3 is a component of the HAUS augmin-like complex which regulates mitotic spindle assembly and centrosome integrity and is required for completion of cytokinesis. The complex interacts with the gamma-tubulin ring complex and this interaction is required for spindle assembly.

Notable Publications

Author	Pubmed ID	Journal	Application
Yaqian Zhang	35604367	J Cell Biol	WB

Storage

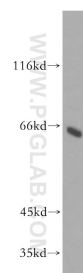
Storage:
Store at -20°C. Stable for one year after shipment.
Storage Buffer:
PBS with 0.02% sodium azide and 50% glycerol pH 7.3.
 Aliquoting is unnecessary for -20°C storage

*** 20ul sizes contain 0.1% BSA

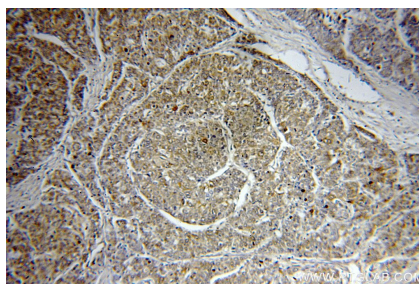
For technical support and original validation data for this product please contact:
 T: 1 (888) 4PTGLAB (1-888-478-4522) (toll free in USA), or 1(312) 455-8498 (outside USA)
 E: proteintech@ptglab.com
 W: ptglab.com

This product is exclusively available under Proteintech Group brand and is not available to purchase from any other manufacturer.

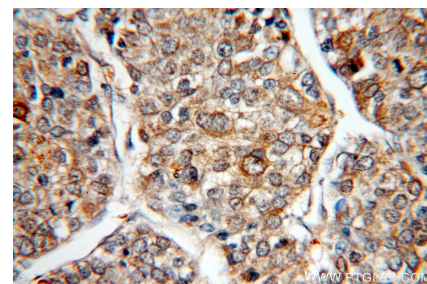
Selected Validation Data



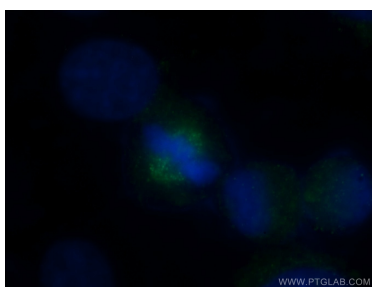
HepG2 cells were subjected to SDS PAGE followed by western blot with 18991-1-AP (HAUS3 antibody) at dilution of 1:500 incubated at room temperature for 1.5 hours.



Immunohistochemical analysis of paraffin-embedded human liver cancer using 18991-1-AP (HAUS3 antibody) at dilution of 1:100 (under 10x lens).



Immunohistochemical analysis of paraffin-embedded human liver cancer using 18991-1-AP (HAUS3 antibody) at dilution of 1:100 (under 40x lens).



Immunofluorescent analysis of (-20°C Ethanol) fixed HepG2 cells using 18991-1-AP (HAUS3 antibody) at dilution of 1:50 and Alexa Fluor 488-conjugated AffiniPure Goat Anti-Rabbit IgG(H+L).