

For Research Use Only

SLC24A4 Polyclonal antibody

Catalog Number: 18992-1-AP

Featured Product

6 Publications



Basic Information

Catalog Number:

18992-1-AP

Size:

150ul, Concentration: 600 ug/ml by Nanodrop;

Source:

Rabbit

Isotype:

IgG

GenBank Accession Number:

NM_153646

GeneID (NCBI):

123041

UNIPROT ID:

Q8NFF2

Full Name:

solute carrier family 24 (sodium/potassium/calcium exchanger), member 4

Calculated MW:

69 kDa

Observed MW:

62-90 kDa

Purification Method:

Antigen affinity purification

Recommended Dilutions:

WB: 1:2000-1:16000

IHC: 1:50-1:500

IF-P: 1:50-1:500

Applications

Tested Applications:

WB, IHC, IF-P, ELISA

Cited Applications:

WB, IHC, IF

Species Specificity:

human, mouse

Cited Species:

human, mouse, rat

Positive Controls:

WB: mouse brain tissue, HeLa cells, mouse heart tissue

IHC: mouse brain tissue, human heart tissue

IF-P: mouse eye tissue,

Note-IHC: suggested antigen retrieval with TE buffer pH 9.0; (*) Alternatively, antigen retrieval may be performed with citrate buffer pH 6.0

Background Information

SLC24A4, also named as NCKX4, belongs to the sodium/potassium/calcium exchanger family. SLC24A4 transports 1 Ca²⁺ and 1 K⁺ in exchange for 4 Na⁺. Genetic variations in SLC24A4 are associated with skin/hair/eye pigmentation type 6 (SHEP6).

Notable Publications

Author	Pubmed ID	Journal	Application
Akane Inoue	34592494	Bone	IHC
A L J J Bronckers	26403673	J Dent Res	IHC,IF
A L J J Bronckers	27752731	Calcif Tissue Int	WB

Storage

Storage:

Store at -20°C. Stable for one year after shipment.

Storage Buffer:

PBS with 0.02% sodium azide and 50% glycerol, pH7.3

Aliquoting is unnecessary for -20°C storage

*** 20ul sizes contain 0.1% BSA

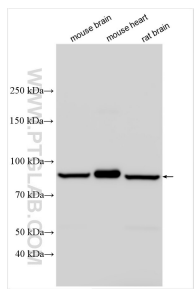
For technical support and original validation data for this product please contact:

T: 1 (888) 4PTGLAB (1-888-478-4522) (toll free in USA), or 1(312) 455-8498 (outside USA)

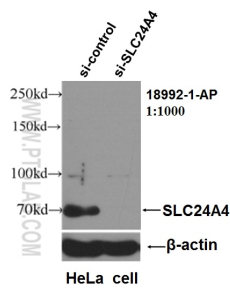
E: proteintech@ptglab.com
W: ptglab.com

This product is exclusively available under Proteintech Group brand and is not available to purchase from any other manufacturer.

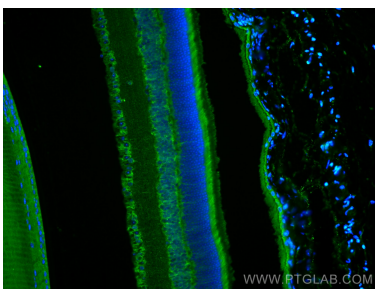
Selected Validation Data



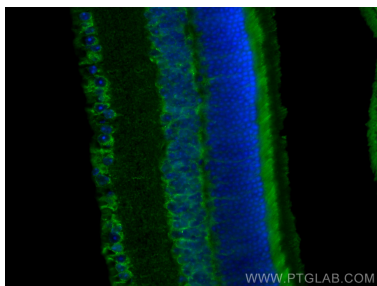
Various lysates were subjected to SDS PAGE followed by western blot with 18992-1-AP (SLC24A4 antibody) at dilution of 1:8000 incubated at room temperature for 1.5 hours.



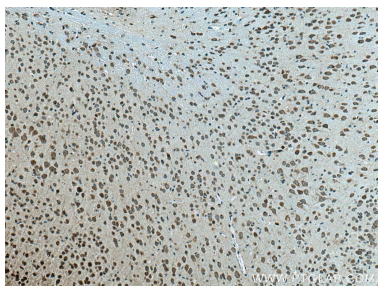
WB result of SLC24A4 antibody (18992-1-AP, 1:1000) with si-Control and si-SLC24A4 transfected HeLa cells.



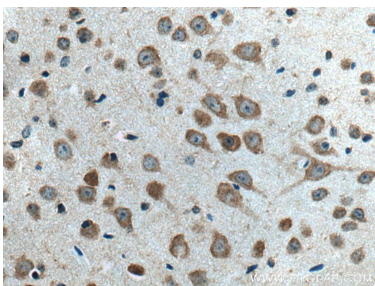
Immunofluorescent analysis of (4% PFA) fixed mouse eye tissue using SLC24A4 antibody (18992-1-AP) at dilution of 1:200 and CoraLite@488-Conjugated Goat Anti-Rabbit IgG(H+L).



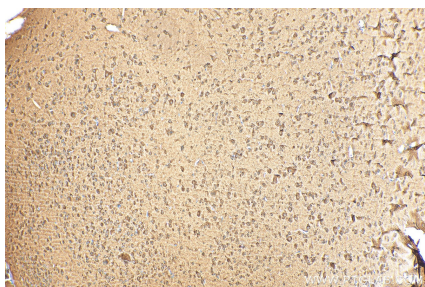
Immunofluorescent analysis of (4% PFA) fixed mouse eye tissue using SLC24A4 antibody (18992-1-AP) at dilution of 1:200 and CoraLite@488-Conjugated Goat Anti-Rabbit IgG(H+L).



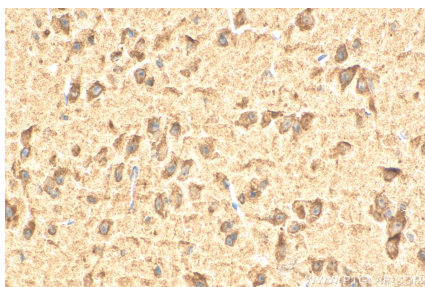
Immunohistochemical analysis of paraffin-embedded mouse brain tissue slide using 18992-1-AP (SLC24A4 antibody) at dilution of 1:200 (under 10x lens). Heat mediated antigen retrieval with Tris-EDTA buffer (pH 9.0).



Immunohistochemical analysis of paraffin-embedded mouse brain tissue slide using 18992-1-AP (SLC24A4 antibody) at dilution of 1:200 (under 40x lens). Heat mediated antigen retrieval with Tris-EDTA buffer (pH 9.0).



Immunohistochemical analysis of paraffin-embedded mouse brain tissue slide using 18992-1-AP (SLC24A4 antibody) at dilution of 1:200 (under 10x lens). Heat mediated antigen retrieval with Tris-EDTA buffer (pH 9.0).



Immunohistochemical analysis of paraffin-embedded mouse brain tissue slide using 18992-1-AP (SLC24A4 antibody) at dilution of 1:200 (under 40x lens). Heat mediated antigen retrieval with Tris-EDTA buffer (pH 9.0).