

For Research Use Only

PTH-Specific Polyclonal antibody

Catalog Number:19001-1-AP



Basic Information

Catalog Number:

19001-1-AP

Size:

150ul , Concentration: 200 ug/ml by Nanodrop and 200 ug/ml by Bradford method using BSA as the standard;

Source:

Rabbit

Isotype:

IgG

GenBank Accession Number:

NM_000315

GeneID (NCBI):

5741

UNIPROT ID:

P01270

Full Name:

parathyroid hormone

Calculated MW:

13 kDa

Observed MW:

16-19 kDa

Purification Method:

Antigen affinity purification

Recommended Dilutions:

WB 1:1000-1:4000

Applications

Tested Applications:

WB, ELISA

Species Specificity:

human

Positive Controls:

WB : Recombinant protein,

Background Information

PTH belongs to the parathyroid hormone family. PTH elevates calcium level by dissolving the salts in bone and preventing their renal excretion. Defects in PTH are a cause of familial isolated hypoparathyroidism (FIH).

Storage

Storage:

Store at -20°C. Stable for one year after shipment.

Storage Buffer:

PBS with 0.02% sodium azide and 50% glycerol pH 7.3.

Aliquoting is unnecessary for -20°C storage

***** 20ul sizes contain 0.1%BSA**

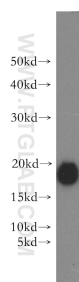
For technical support and original validation data for this product please contact:

T: 1 (888) 4PTGLAB (1-888-478-4522) (toll free in USA), or 1(312) 455-8498 (outside USA)

E: proteintech@ptglab.com
W: ptglab.com

This product is exclusively available under Proteintech Group brand and is not available to purchase from any other manufacturer.

Selected Validation Data



Recombinant protein were subjected to SDS PAGE followed by western blot with 19001-1-AP (PTH-Specific antibody) at dilution of 1:500 incubated at room temperature for 1.5 hours.