

For Research Use Only

# GUCY1B3 Polyclonal antibody

Catalog Number:19011-1-AP

Featured Product

7 Publications



## Basic Information

### Catalog Number:

19011-1-AP

### Size:

150ul , Concentration: 750 ug/ml by Nanodrop and 400 ug/ml by Bradford method using BSA as the standard;

### Source:

Rabbit

### Isotype:

IgG

### Immunogen Catalog Number:

AG5196

### GenBank Accession Number:

BC047620

### GeneID (NCBI):

2983

### UNIPROT ID:

Q02153

### Full Name:

guanylate cyclase 1, soluble, beta 3

### Calculated MW:

71 kDa

### Observed MW:

67-71 kDa

### Purification Method:

Antigen affinity purification

### Recommended Dilutions:

WB 1:1000-1:4000

IP 0.5-4.0 ug for 1.0-3.0 mg of total protein lysate

IHC 1:50-1:500

IF/ICC 1:10-1:100

## Applications

### Tested Applications:

WB, IHC, IF/ICC, IP, ELISA

### Cited Applications:

WB, IHC

### Species Specificity:

human, mouse, rat

### Cited Species:

human, mouse, rat

**Note-IHC: suggested antigen retrieval with TE buffer pH 9.0; (\*) Alternatively, antigen retrieval may be performed with citrate buffer pH 6.0**

### Positive Controls:

**WB** : human placenta tissue, mouse lung tissue, rat lung tissue

**IP** : human placenta tissue,

**IHC** : mouse brain tissue, human lung cancer tissue

**IF/ICC** : Hela cells, MCF-7 cells

## Notable Publications

Author	Pubmed ID	Journal	Application
Andrea de la Fuente-Alonso	33976159	Nat Commun	WB
Catarina Rippe	28465505	Sci Rep	WB,IHC
Baoyi Zhu	28285351	Cell Tissue Res	WB

## Storage

### Storage:

Store at -20°C. Stable for one year after shipment.

### Storage Buffer:

PBS with 0.02% sodium azide and 50% glycerol pH 7.3.

Aliquoting is unnecessary for -20°C storage

\*\*\* 20ul sizes contain 0.1% BSA

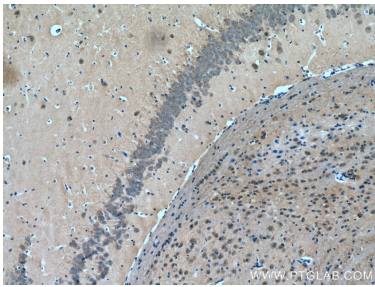
For technical support and original validation data for this product please contact:

T: 1 (888) 4PTGLAB (1-888-478-4522) (toll free in USA), or 1(312) 455-8498 (outside USA)

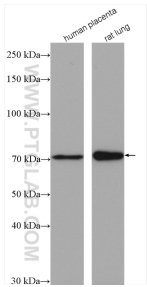
E: [proteintech@ptglab.com](mailto:proteintech@ptglab.com)  
W: [ptglab.com](http://ptglab.com)

This product is exclusively available under Proteintech Group brand and is not available to purchase from any other manufacturer.

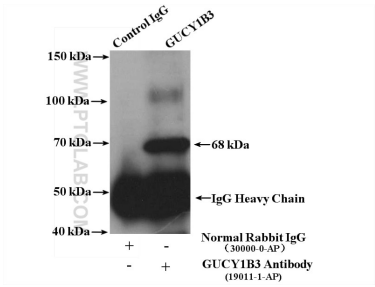
Selected Validation Data



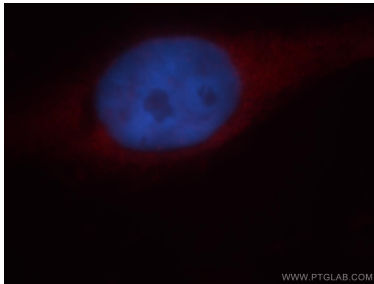
Immunohistochemical analysis of paraffin-embedded mouse brain tissue slide using 19011-1-AP (GUCY1B3 antibody) at dilution of 1:200 (under 10x lens). Heat mediated antigen retrieval with Tris-EDTA buffer (pH 9.0).



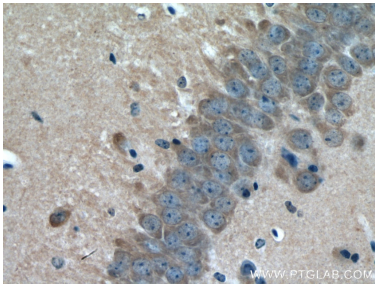
Various lysates were subjected to SDS PAGE followed by western blot with 19011-1-AP (GUCY1B3 antibody) at dilution of 1:2000 incubated at room temperature for 1.5 hours.



IP result of anti-GUCY1B3 (IP:19011-1-AP, 4ug; Detection:19011-1-AP 1:500) with human placenta tissue lysate 2600 ug.



Immunofluorescent analysis of Hela cells, using GUCY1B3 antibody 19011-1-AP at 1:25 dilution and Rhodamine-labeled goat anti-rabbit IgG (red). Blue pseudocolor = DAPI (fluorescent DNA dye).



Immunohistochemical analysis of paraffin-embedded mouse brain tissue slide using 19011-1-AP (GUCY1B3 antibody) at dilution of 1:200 (under 40x lens). Heat mediated antigen retrieval with Tris-EDTA buffer (pH 9.0).