

For Research Use Only

SNTB2 Polyclonal antibody

Catalog Number: 19027-1-AP



Basic Information

Catalog Number:

19027-1-AP

Size:

150ul, Concentration: 260 ug/ml by Nanodrop;

Source:

Rabbit

Isotype:

IgG

Immunogen Catalog Number:

AG13504

GenBank Accession Number:

BC048215

GeneID (NCBI):

6645

UNIPROT ID:

Q13425

Full Name:

syntrophin, beta 2 (dystrophin-associated protein A1, 59kDa, basic component 2)

Calculated MW:

540 aa, 58 kDa

Observed MW:

50-60 kDa

Purification Method:

Antigen affinity purification

Recommended Dilutions:

WB 1:2000-1:12000

Applications

Tested Applications:

WB, ELISA

Species Specificity:

human, mouse, rat

Positive Controls:

WB : mouse lung tissue, mouse pancreas tissue, rat pancreas tissue

Background Information

Syntrophin beta 2(SNTB2) also known as SNT3 and SNTL, belongs to the syntrophin family. SNTB2 is a peripheral membrane protein associated with dystrophin and antinomyotrophin-associated protein complexes.

Storage

Storage:

Store at -20°C. Stable for one year after shipment.

Storage Buffer:

PBS with 0.02% sodium azide and 50% glycerol pH 7.3.

Aliquoting is unnecessary for -20°C storage

*** 20ul sizes contain 0.1% BSA

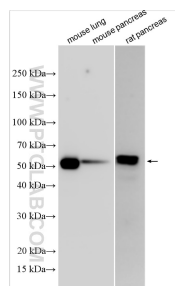
For technical support and original validation data for this product please contact:

T: 1 (888) 4PTGLAB (1-888-478-4522) (toll free in USA), or 1(312) 455-8498 (outside USA)

E: proteintech@ptglab.com
W: ptglab.com

This product is exclusively available under Proteintech Group brand and is not available to purchase from any other manufacturer.

Selected Validation Data



Various lysates were subjected to SDS PAGE followed by western blot with 19027-1-AP (SNTB2 antibody) at dilution of 1:6000 incubated at room temperature for 1.5 hours.