

For Research Use Only

SNTB2 Polyclonal antibody, PBS Only

Catalog Number:19027-1-PBS



Basic Information

Catalog Number:

19027-1-PBS

Size:

100ug , Concentration: 1 mg/ml by Nanodrop;

Source:

Rabbit

Isotype:

IgG

Immunogen Catalog Number:

AG13504

GenBank Accession Number:

BC048215

GeneID (NCBI):

6645

UNIPROT ID:

Q13425

Full Name:

syntrophin, beta 2 (dystrophin-associated protein A1, 59kDa, basic component 2)

Calculated MW:

540 aa, 58 kDa

Observed MW:

50-60 kDa

Purification Method:

Antigen affinity purification

Applications

Tested Applications:

WB, Indirect ELISA

Species Specificity:

human, mouse, rat

Background Information

Syntrophin beta 2(SNTB2) also known as SNT3 and SNTL, belongs to the syntrophin family. SNTB2 is a peripheral membrane protein associated with dystrophin and antityotrophin-associated protein complexes.

Storage

Storage:

Store at -80°C.

Storage Buffer:

PBS Only

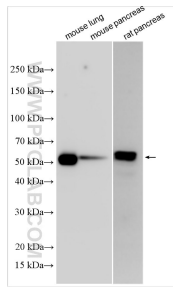
For technical support and original validation data for this product please contact:

T: 1 (888) 4PTGLAB (1-888-478-4522) (toll free in USA), or 1(312) 455-8498 (outside USA)

E: proteintech@ptglab.com
W: ptglab.com

This product is exclusively available under Proteintech Group brand and is not available to purchase from any other manufacturer.

Selected Validation Data



Various lysates were subjected to SDS PAGE followed by western blot with 19027-1-AP (SNTB2 antibody) at dilution of 1:6000 incubated at room temperature for 1.5 hours. This data was developed using the same antibody clone with 19027-1-PBS in a different storage buffer formulation.