

For Research Use Only

KLC1 Polyclonal antibody

Catalog Number: 19028-1-AP

Featured Product

1 Publications



Basic Information

Catalog Number: 19028-1-AP	GenBank Accession Number: BC008881	Purification Method: Antigen affinity purification
Size: 150ul , Concentration: 350 µg/ml by Nanodrop;	GeneID (NCBI): 3831	Recommended Dilutions: WB 1:500-1:3000 IHC 1:20-1:200 IF 1:10-1:100
Source: Rabbit	Full Name: kinesin light chain 1	
Isotype: IgG	Calculated MW: 65 kDa	
Immunogen Catalog Number: AG13570	Observed MW: 61-70 kDa	

Applications

Tested Applications: IF, IHC, WB, ELISA	Positive Controls: WB : mouse brain tissue, COLO 320 cells, HepG2 cells, SH-SY5Y cells IHC : human brain tissue, IF : HeLa cells, HepG2 cells
Cited Applications: WB	
Species Specificity: human, mouse, rat	
Cited Species: human	
Note-IHC: suggested antigen retrieval with TE buffer pH 9.0; (*) Alternatively, antigen retrieval may be performed with citrate buffer pH 6.0	

Background Information

Notable Publications

Author	Pubmed ID	Journal	Application
Amélie Robert	29944446	FASEB J	WB

Storage

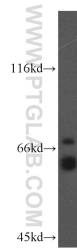
Storage:
Store at -20°C. Stable for one year after shipment.
Storage Buffer:
PBS with 0.02% sodium azide and 50% glycerol pH 7.3.
Aliquoting is unnecessary for -20°C storage

*** 20ul sizes contain 0.1% BSA

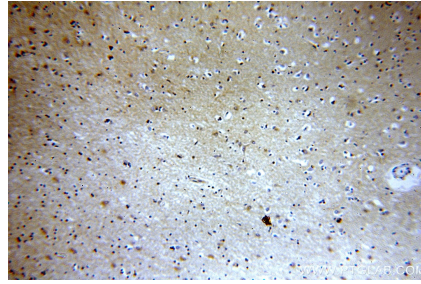
For technical support and original validation data for this product please contact:
T: 1 (888) 4PTGLAB (1-888-478-4522) (toll free in USA), or 1(312) 455-8498 (outside USA)
E: proteintech@ptglab.com
W: ptglab.com

This product is exclusively available under Proteintech Group brand and is not available to purchase from any other manufacturer.

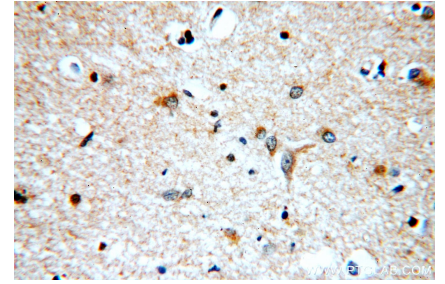
Selected Validation Data



mouse brain tissue were subjected to SDS PAGE followed by western blot with 19028-1-AP (KLC1 antibody) at dilution of 1:300 incubated at room temperature for 1.5 hours.



Immunohistochemical analysis of paraffin-embedded human brain using 19028-1-AP (KLC1 antibody) at dilution of 1:100 (under 10x lens).



Immunohistochemical analysis of paraffin-embedded human brain using 19028-1-AP (KLC1 antibody) at dilution of 1:100 (under 40x lens).



Immunofluorescent analysis of HeLa cells, using KLC1 antibody 19028-1-AP at 1:25 dilution and Rhodamine-labeled goat anti-rabbit IgG (red). Blue pseudocolor = DAPI (fluorescent DNA dye).