

For Research Use Only

# SGMS1 Polyclonal antibody

Catalog Number: 19050-1-AP

Featured Product

11 Publications



## Basic Information

### Catalog Number:

19050-1-AP

### Size:

150ul, Concentration: 450 ug/ml by Nanodrop;

### Source:

Rabbit

### Isotype:

IgG

### Immunogen Catalog Number:

AG5246

### GenBank Accession Number:

BC042899

### GeneID (NCBI):

259230

### UNIPROT ID:

Q86VZ5

### Full Name:

sphingomyelin synthase 1

### Calculated MW:

49 kDa

### Observed MW:

25 kDa, 49 kDa

### Purification Method:

Antigen affinity purification

### Recommended Dilutions:

WB 1:500-1:1000

IP 0.5-4.0 ug for 1.0-3.0 mg of total protein lysate

IHC 1:20-1:200

## Applications

### Tested Applications:

WB, IP, IHC, ELISA

### Cited Applications:

WB, IHC, IF

### Species Specificity:

human, mouse, rat

### Cited Species:

human, mouse, rat

**Note-IHC: suggested antigen retrieval with TE buffer pH 9.0; (\*) Alternatively, antigen retrieval may be performed with citrate buffer pH 6.0**

### Positive Controls:

WB : HT-29 cells, human heart tissue

IP : mouse heart tissue,

IHC : human liver tissue,

## Background Information

Sphingomyelin synthase (SMS), with two isoforms, SMS1 (SGMS1) and SMS2, is a key enzyme involved in the generation and development of SM. SMS can participate in inflammation, atherosclerosis, proliferation, apoptosis, differentiation and other functions(PMID:30535436). SMS1 is frequently downregulated in various solid cancers, more particularly in melanoma(PMID:31114500). SGMS1 has two isoforms.

## Notable Publications

Author	Pubmed ID	Journal	Application
Mei-Hong Lu	30243987	Exp Neurol	WB,IF
Xin Tracy Liu	36333295	Oncogenesis	WB
Yi-Yu Qi	35391788	Drug Des Devel Ther	IF

## Storage

### Storage:

Store at -20°C. Stable for one year after shipment.

### Storage Buffer:

PBS with 0.02% sodium azide and 50% glycerol pH 7.3.

Aliquoting is unnecessary for -20°C storage

\*\*\* 20ul sizes contain 0.1% BSA

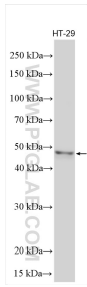
For technical support and original validation data for this product please contact:

T: 1 (888) 4PTGLAB (1-888-478-4522) (toll free in USA), or 1(312) 455-8498 (outside USA)

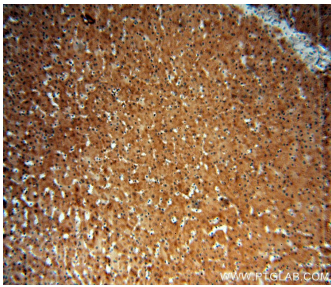
E: [proteintech@ptglab.com](mailto:proteintech@ptglab.com)  
W: [ptglab.com](http://ptglab.com)

This product is exclusively available under Proteintech Group brand and is not available to purchase from any other manufacturer.

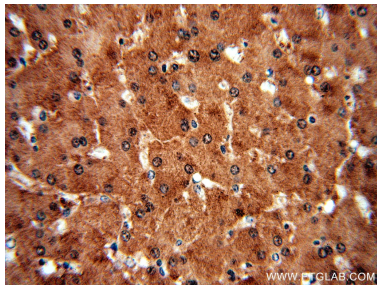
Selected Validation Data



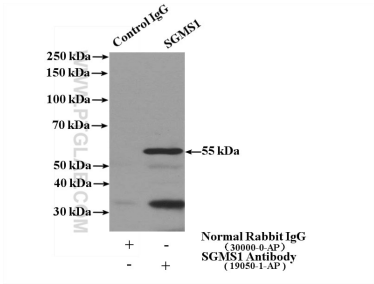
Various lysates were subjected to SDS PAGE followed by western blot with 19050-1-AP (SGMS1 antibody) at dilution of 1:800 incubated at room temperature for 1.5 hours.



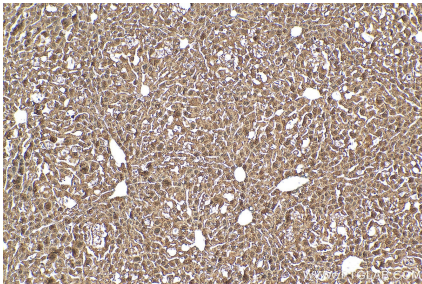
Immunohistochemical analysis of paraffin-embedded human liver using 19050-1-AP (SGMS1 antibody) at dilution of 1:50 (under 10x lens).



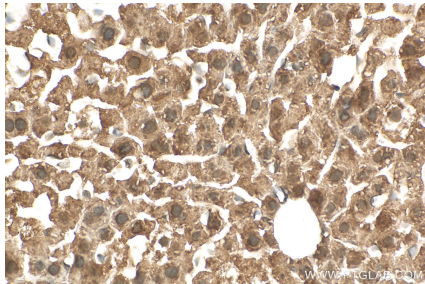
Immunohistochemical analysis of paraffin-embedded human liver using 19050-1-AP (SGMS1 antibody) at dilution of 1:50 (under 40x lens).



IP result of anti-SGMS1 (IP:19050-1-AP, 4ug; Detection:19050-1-AP 1:300) with mouse heart tissue lysate 4000ug.



Immunohistochemical analysis of paraffin-embedded mouse liver tissue slide using 19050-1-AP (SGMS1 antibody) at dilution of 1:200 (under 10x lens). Heat mediated antigen retrieval with Tris-EDTA buffer (pH 9.0).



Immunohistochemical analysis of paraffin-embedded mouse liver tissue slide using 19050-1-AP (SGMS1 antibody) at dilution of 1:200 (under 40x lens). Heat mediated antigen retrieval with Tris-EDTA buffer (pH 9.0).