

For Research Use Only

BAG1 Polyclonal antibody

Catalog Number:19064-1-AP

Featured Product

3 Publications



Basic Information

Catalog Number:

19064-1-AP

Size:

150ul , Concentration: 900 ug/ml by Nanodrop and 493 ug/ml by Bradford method using BSA as the standard;

Source:

Rabbit

Isotype:

IgG

Immunogen Catalog Number:

AG13555

GenBank Accession Number:

BC014774

GeneID (NCBI):

573

UNIPROT ID:

Q99933

Full Name:

BCL2-associated athanogene

Calculated MW:

39 kDa

Observed MW:

50-55 kDa, 30-33 kDa

Purification Method:

Antigen affinity purification

Recommended Dilutions:

WB 1:500-1:1000

IP 0.5-4.0 ug for 1.0-3.0 mg of total protein lysate

IHC 1:20-1:200

IF/ICC 1:50-1:500

Applications

Tested Applications:

WB, IHC, IF/ICC, IP, ELISA

Cited Applications:

WB, IHC

Species Specificity:

human, mouse

Cited Species:

human

Positive Controls:

WB : HeLa cells, UV treated HeLa cells, Jurkat cells, MCF-7 cells, HEK-293 cells, RAW264.7, HT-1080 cells, HL-60 cells

IP : HeLa cells,

IHC : human testis tissue, human ovary tissue

IF/ICC : HeLa cells, MCF-7 cells

Note-IHC: suggested antigen retrieval with TE buffer pH 9.0; (*) Alternatively, antigen retrieval may be performed with citrate buffer pH 6.0

Background Information

BAG1 have been identified that modulate gene transcription through poorly defined mechanisms. Four isoforms of the BAG1 protein (BAG1S, BAG1, BAG1M and BAG1L) can be produced from a common mRNA by use of alternative translation initiation sites, including a non-canonical CTG codon in one instance. The longest, BAG1L (Mr ~50K), contains a nuclear localization signal (NLS) and resides in the nucleus, whereas BAG1M (Mr ~46K) has an incomplete NLS and distributes mainly in cytosol, unless dragged into the nucleus through interactions with other. Distribution of BAG1S(p33) is not clear yet. This antibody can recognize all the isoforms of BAG1.

Notable Publications

| Author | Pubmed ID | Journal | Application |
|--------------|-----------|---------------------|-------------|
| Wenbai Huang | 26717967 | Oncol Rep | |
| Jiayu Guo | 39128415 | Int Immunopharmacol | WB |
| Yue Fan | 38325908 | Ann Rheum Dis | IHC |

Storage

Storage:

Store at -20°C. Stable for one year after shipment.

Storage Buffer:

PBS with 0.02% sodium azide and 50% glycerol pH 7.3.

Aliquoting is unnecessary for -20°C storage

*** 20ul sizes contain 0.1% BSA

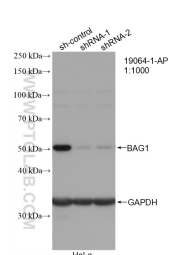
For technical support and original validation data for this product please contact:

T: 1 (888) 4PTGLAB (1-888-478-4522) (toll free in USA), or 1(312) 455-8498 (outside USA)

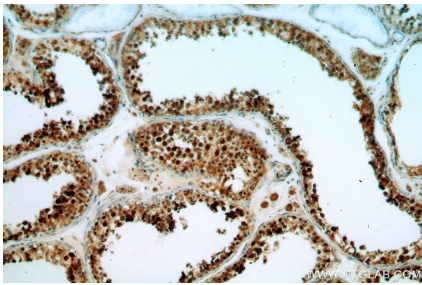
E: proteintech@ptglab.com
W: ptglab.com

This product is exclusively available under Proteintech Group brand and is not available to purchase from any other manufacturer.

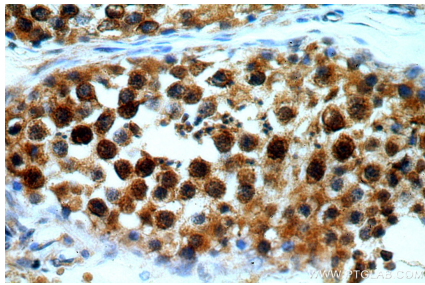
Selected Validation Data



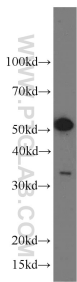
WB result of BAG1 antibody (19064-1-AP; 1:1000; incubated at room temperature for 1.5 hours) with sh-Control and sh-BAG1 transfected HeLa cells.



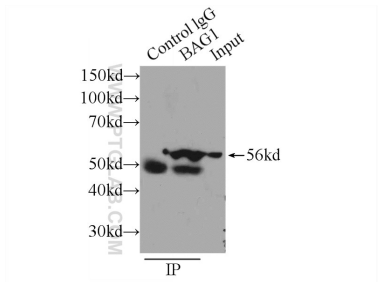
Immunohistochemical analysis of paraffin-embedded human testis using 19064-1-AP (BAG1 antibody) at dilution of 1:50 (under 10x lens).



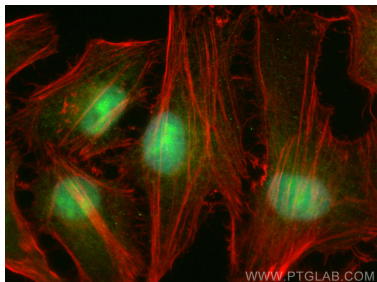
Immunohistochemical analysis of paraffin-embedded human testis using 19064-1-AP (BAG1 antibody) at dilution of 1:50 (under 40x lens).



HeLa cells were subjected to SDS PAGE followed by western blot with 19064-1-AP (BAG1 antibody) at dilution of 1:500 incubated at room temperature for 1.5 hours.



IP result of anti-BAG1 (IP:19064-1-AP, 3ug; Detection:19064-1-AP 1:500) with HeLa cells lysate 3440ug.



Immunofluorescent analysis of (4% PFA) fixed HeLa cells using BAG1 antibody (19064-1-AP) at dilution of 1:200 and CoraLite®488-Conjugated Goat Anti-Rabbit IgG(H+L) (SA00013-2), CL594-phalloidin (red).