

For Research Use Only

BMPR2 Polyclonal antibody

Catalog Number: 19087-1-AP

Featured Product

8 Publications



Basic Information

Catalog Number:

19087-1-AP

Size:

150ul, Concentration: 400 µg/ml by Nanodrop and 367 µg/ml by Bradford method using BSA as the standard;

Source:

Rabbit

Isotype:

IgG

Immunogen Catalog Number:

AG5868

GenBank Accession Number:

BC052985

GeneID (NCBI):

659

UNIPROT ID:

Q13873

Full Name:

bone morphogenetic protein receptor, type II (serine/threonine kinase)

Calculated MW:

115 kDa

Observed MW:

120 kDa

Purification Method:

Antigen affinity purification

Recommended Dilutions:

WB 1:1000-1:6000

IP 0.5-4.0 µg for 1.0-3.0 mg of total protein lysate

IHC 1:50-1:500

Applications

Tested Applications:

WB, IHC, IP, ELISA

Cited Applications:

WB, IF

Species Specificity:

human, mouse, rat

Cited Species:

human, mouse, rat

Note-IHC: suggested antigen retrieval with TE buffer pH 9.0; (*) Alternatively, antigen retrieval may be performed with citrate buffer pH 6.0

Positive Controls:

WB : human heart tissue, mouse brain tissue

IP : mouse brain tissue,

IHC : human heart tissue,

Background Information

BMPs (bone morphogenetic protein) are involved in endochondral bone formation and embryogenesis. BMPR2 encodes a member of the (BMP) receptor family of transmembrane serine/threonine kinases. It is a widely expressed receptor, with high mRNA expression during development in many tissues. The dimer of BMPR2 receptors (70-80 kD) forms a complex with a dimer of type I BMPR1(50-55 kD) in signal transduction. This antibody recognizes endogenous levels of total BMPR2 protein, including 115 kD precursor, 75 kD mature form, and 150 kD dimer.

Notable Publications

Author	Pubmed ID	Journal	Application
Sanna Vattulainen-Collanus	30272025	Commun Biol	WB
Yongyi Bai	34546460	Basic Res Cardiol	WB,IF
Ling Guo	31578224	J Cell Biol	

Storage

Storage:

Store at -20°C. Stable for one year after shipment.

Storage Buffer:

PBS with 0.02% sodium azide and 50% glycerol pH 7.3.

Aliquoting is unnecessary for -20°C storage

*** 20ul sizes contain 0.1% BSA

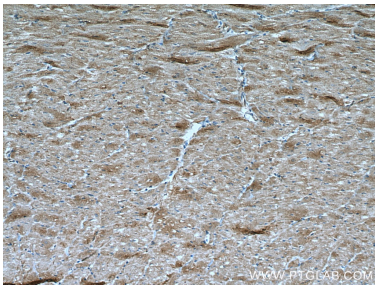
For technical support and original validation data for this product please contact:

T: 1 (888) 4PTGLAB (1-888-478-4522) (toll free in USA), or 1(312) 455-8498 (outside USA)

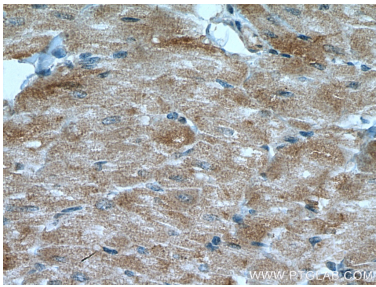
E: proteintech@ptglab.com
W: ptglab.com

This product is exclusively available under Proteintech Group brand and is not available to purchase from any other manufacturer.

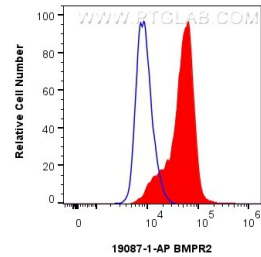
Selected Validation Data



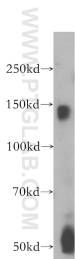
Immunohistochemical analysis of paraffin-embedded human heart tissue slide using 19087-1-AP (BMPR2 antibody) at dilution of 1:200 (under 10x lens). Heat mediated antigen retrieval with Tris-EDTA buffer (pH 9.0).



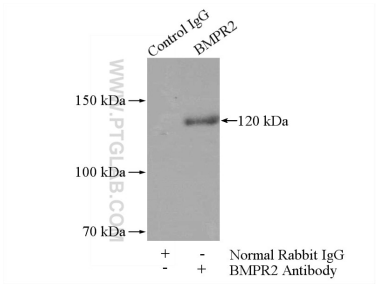
Immunohistochemical analysis of paraffin-embedded human heart tissue slide using 19087-1-AP (BMPR2 antibody) at dilution of 1:200 (under 40x lens). Heat mediated antigen retrieval with Tris-EDTA buffer (pH 9.0).



1x10⁶ PC-3 cells were intracellularly stained with 0.4 ug BMPR2 Polyclonal antibody (19087-1-AP) and CoraLite®488-Conjugated Goat Anti-Rabbit IgG(H+L) (SA00013-2)(red), or 0.4 ug Rabbit IgG control Rabbit PolyAb (30000-0-AP) (blue). Cells were fixed with 4% PFA and permeabilized with Flow Cytometry Perm Buffer (PF00011-C).



human heart tissue were subjected to SDS PAGE followed by western blot with 19087-1-AP (BMPR2 antibody) at dilution of 1:400 incubated at room temperature for 1.5 hours.



IP result of anti-BMPR2 (IP:19087-1-AP, 4ug; Detection:19087-1-AP 1:1500) with mouse brain tissue lysate 4000ug.