

For Research Use Only

CYP2S1 Polyclonal antibody

Catalog Number: 19100-1-AP **1 Publications**



Basic Information

Catalog Number: 19100-1-AP	GenBank Accession Number: BC033691	Purification Method: Antigen affinity purification
Size: 150ul , Concentration: 500 µg/ml by Nanodrop and 313 µg/ml by Bradford method using BSA as the standard;	GeneID (NCBI): 29785	Recommended Dilutions: WB 1:300-1:1000 IF 1:10-1:100
Source: Rabbit	Full Name: cytochrome P450, family 2, subfamily S, polypeptide 1	
Isotype: IgG	Calculated MW: 504 aa, 56 kDa	
Immunogen Catalog Number: AG4605	Observed MW: 50 kDa	

Applications

Tested Applications: IF, WB, ELISA	Positive Controls: WB : COLO 320 cells, mouse kidney tissue
Cited Applications: WB	IF : HeLa cells,
Species Specificity: human, mouse	
Cited Species: human	

Background Information

Notable Publications

Author	Pubmed ID	Journal	Application
Hanna Szaefer	31561186	Pharmacol Rep	WB

Storage

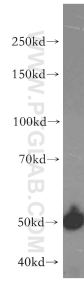
Storage:
Store at -20°C. Stable for one year after shipment.
Storage Buffer:
PBS with 0.02% sodium azide and 50% glycerol pH 7.3.
Aliquoting is unnecessary for -20°C storage

*** 20ul sizes contain 0.1% BSA

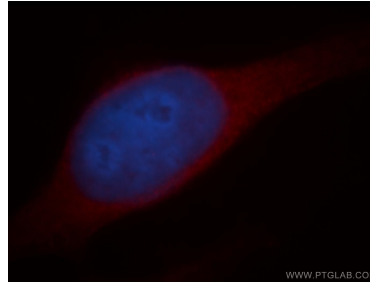
For technical support and original validation data for this product please contact:
T: 1 (888) 4PTGLAB (1-888-478-4522) (toll free in USA), or 1(312) 455-8498 (outside USA)
E: proteintech@ptglab.com
W: ptglab.com

This product is exclusively available under Proteintech Group brand and is not available to purchase from any other manufacturer.

Selected Validation Data



COLO 320 cells were subjected to SDS PAGE followed by western blot with 19100-1-AP (CYP2S1 antibody) at dilution of 1:500 incubated at room temperature for 1.5 hours.



Immunofluorescent analysis of HeLa cells, using CYP2S1 antibody 19100-1-AP at 1:25 dilution and Rhodamine-labeled goat anti-rabbit IgG (red). Blue pseudocolor = DAPI (fluorescent DNA dye).