

For Research Use Only

ALPK1 Polyclonal antibody

Catalog Number: 19107-1-AP **7 Publications**



Basic Information

| | | |
|--|--|---|
| Catalog Number: 19107-1-AP | GenBank Accession Number: BC060780 | Purification Method: Antigen affinity purification |
| Size: 150ul , Concentration: 400 µg/ml by Nanodrop and 267 µg/ml by Bradford method using BSA as the standard; | GeneID (NCBI): 80216 | Recommended Dilutions: WB 1:1000-1:4000 IHC 1:50-1:500 |
| Source: Rabbit | Full Name: alpha-kinase 1 | |
| Isotype: IgG | Calculated MW: 139 kDa | |
| Immunogen Catalog Number: AG5320 | Observed MW: 140 kDa | |

Applications

| | |
|--|---|
| Tested Applications: IHC, WB, ELISA | Positive Controls: WB : COLO 320 cells, HEK-293 cells, HepG2 cells IHC : mouse brain tissue, |
| Cited Applications: IF, IHC, WB | |
| Species Specificity: human, mouse | |
| Cited Species: human, mouse | |
| Note-IHC: suggested antigen retrieval with TE buffer pH 9.0; (*) Alternatively, antigen retrieval may be performed with citrate buffer pH 6.0 | |

Background Information

Alpha-protein kinase 1, also known as alpha-kinase 1 (ALPK1), is associated with chronic kidney disease (CKD), myocardial infarction, gout and type 2 diabetes mellitus (DM). ALPK1 mutant has been reported to cause severe defects in motor co-ordination in mice. ALPK1 enhances the expression of proinflammatory cytokines including IL-1 β , IL-8 and TGF- β 1 in cultured human THP1 and human embryonic kidney 293 (HEK293) cells (PMID: 31557402, PMID: 26275947). ALPK1 short isoform (108 kDa) was highly expressed in brain, spinal cord, heart, lung, spleen, thymus, small intestine, skin and testis, while detectable in skeletal muscle and kidney. ALPK1 large isoform (130 kDa) appeared in heart, lung, thymus and skin (PMID: 21208416).

Notable Publications

| Author | Pubmed ID | Journal | Application |
|--------------|-----------|---------------------|-------------|
| Fei Ding | 34621265 | Front Immunol | WB |
| Jing-Ying Li | 36274483 | Int Immunopharmacol | WB |
| X Liu | 35689396 | J Dent Res | WB,IHC |

Storage

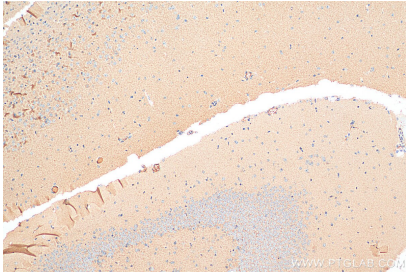
Storage:
Store at -20°C. Stable for one year after shipment.
Storage Buffer:
PBS with 0.02% sodium azide and 50% glycerol pH 7.3.
Aliquoting is unnecessary for -20°C storage

*** 20ul sizes contain 0.1% BSA

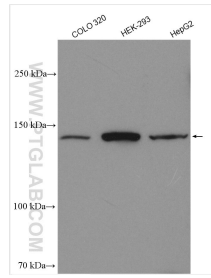
For technical support and original validation data for this product please contact:
T: 1 (888) 4PTGLAB (1-888-478-4522) (toll free in USA), or 1(312) 455-8498 (outside USA)
E: proteintech@ptglab.com
W: ptglab.com

This product is exclusively available under Proteintech Group brand and is not available to purchase from any other manufacturer.

Selected Validation Data



Immunohistochemical analysis of paraffin-embedded mouse brain tissue slide using 19107-1-AP (ALPK1 antibody) at dilution of 1:200 (under 10x lens). Heat mediated antigen retrieval with Tris-EDTA buffer (pH 9.0).



Various lysates were subjected to SDS PAGE followed by western blot with 19107-1-AP (ALPK1 antibody) at dilution of 1:2000 incubated at room temperature for 1.5 hours.