

For Research Use Only

RASSF4 Polyclonal antibody

Catalog Number: 19118-1-AP **2 Publications**



Basic Information

Catalog Number: 19118-1-AP	GenBank Accession Number: BC032593	Purification Method: Antigen affinity purification
Size: 150ul , Concentration: 450 µg/ml by Nanodrop;	GeneID (NCBI): 83937	Recommended Dilutions: WB 1:500-1:2000
Source: Rabbit	Full Name: Ras association (RalGDS/AF-6) domain family member 4	
Isotype: IgG	Calculated MW: 321 aa, 37 kDa	
Immunogen Catalog Number: AG5780	Observed MW: 34-37 kDa	

Applications

Tested Applications: WB, ELISA	Positive Controls: WB : HCT 116 cells, NCI-H1299 cells, U2OS cells, MG-63 cells
Cited Applications: IHC, WB	
Species Specificity: human	
Cited Species: human	

Background Information

RASSF4, a member of the classical RASSF family of scaffold proteins, is associated with alveolar rhabdomyosarcoma (aRMS), an aggressive pediatric cancer of muscle histogenesis. In aRMS, RASSF4 is upregulated in human cell lines and tumors and is oncogenic, portending a worse clinical prognosis. RASSF4 has been reported to directly interact with and activate K-Ras in a GTP-dependent manner. Ectopic expression of RASSF4 induces 293T apoptosis in a Ras-dependent manner and inhibits tumour cell growth.

Notable Publications

Author	Pubmed ID	Journal	Application
Yong Han	26526576	Tumour Biol	IHC
Yong Han	35611809	J Cell Mol Med	WB,IHC

Storage

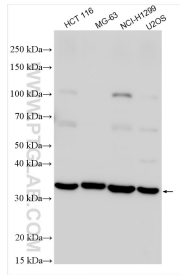
Storage:
Store at -20°C. Stable for one year after shipment.
Storage Buffer:
PBS with 0.02% sodium azide and 50% glycerol pH 7.3.
Aliquoting is unnecessary for -20°C storage

*** 20ul sizes contain 0.1% BSA

For technical support and original validation data for this product please contact:
T: 1 (888) 4PTGLAB (1-888-478-4522) (toll free in USA), or 1(312) 455-8498 (outside USA) E: proteintech@ptglab.com W: ptglab.com

This product is exclusively available under Proteintech Group brand and is not available to purchase from any other manufacturer.

Selected Validation Data



HCT 116 cells were subjected to SDS PAGE followed by western blot with 19118-1-AP (RASSF4 antibody) at dilution of 1:1000 incubated at room temperature for 1.5 hours.