

For Research Use Only

PKC Delta Polyclonal antibody, PBS Only

Catalog Number: 19132-1-PBS

Featured Product



Basic Information

Catalog Number:

19132-1-PBS

Size:

100ug, Concentration: 1 mg/ml by Nanodrop;

Source:

Rabbit

Isotype:

IgG

Immunogen Catalog Number:

AG5631

GenBank Accession Number:

BC043350

GeneID (NCBI):

5580

UNIPROT ID:

Q05655

Full Name:

protein kinase C, delta

Calculated MW:

78 kDa

Observed MW:

70 kDa

Purification Method:

Antigen affinity purification

Applications

Tested Applications:

WB, IHC, IF/ICC, FC (Intra), IP, Indirect ELISA

Species Specificity:

human, mouse, rat

Storage

Storage:

Store at -80°C.

Storage Buffer:

PBS only, pH7.3

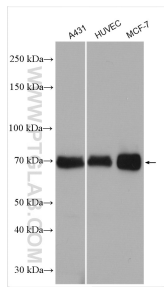
For technical support and original validation data for this product please contact:

T: 1 (888) 4PTGLAB (1-888-478-4522) (toll free in USA), or 1(312) 455-8498 (outside USA)

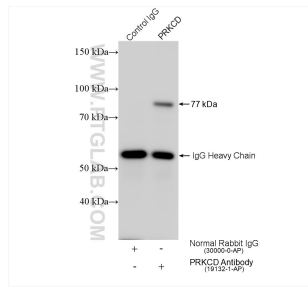
E: proteintech@ptglab.com
W: ptglab.com

This product is exclusively available under Proteintech Group brand and is not available to purchase from any other manufacturer.

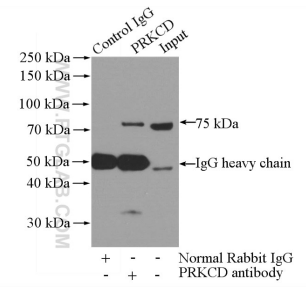
Selected Validation Data



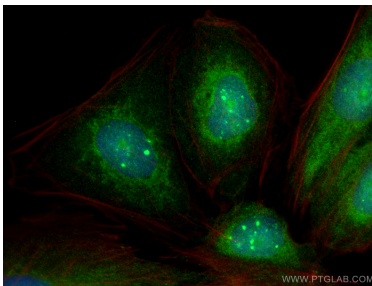
Various lysates were subjected to SDS PAGE followed by western blot with 19132-1-AP (PKC Delta antibody) at dilution of 1:1000 incubated at room temperature for 1.5 hours. This data was developed using the same antibody clone with 19132-1-PBS in a different storage buffer formulation.



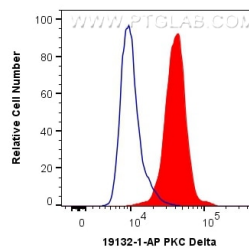
IP result of anti-PKC Delta (IP:19132-1-AP, 4ug; Detection:19132-1-AP 1:800) with A431 cells lysate 2640 ug. This data was developed using the same antibody clone with 19132-1-PBS in a different storage buffer formulation.



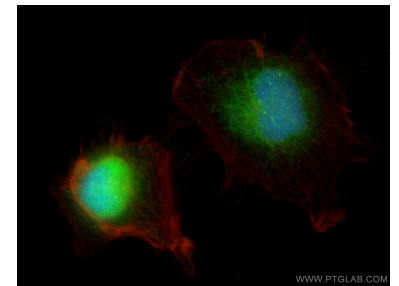
IP result of anti-PKC Delta (IP:19132-1-AP, 4ug; Detection:19132-1-AP 1:500) with A431 cells lysate 2000ug. This data was developed using the same antibody clone with 19132-1-PBS in a different storage buffer formulation.



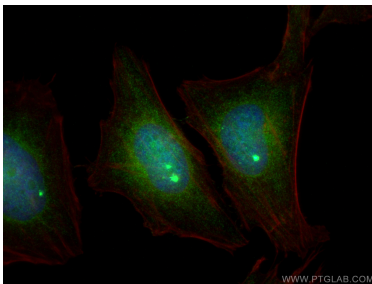
Immunofluorescent analysis of (4% PFA) fixed U2OS cells using PKC Delta antibody (19132-1-AP) at dilution of 1:400 and CoraLite@488-Conjugated AffiniPure Goat Anti-Rabbit IgG(H+L), CL594-Phalloidin (red). This data was developed using the same antibody clone with 19132-1-PBS in a different storage buffer formulation.



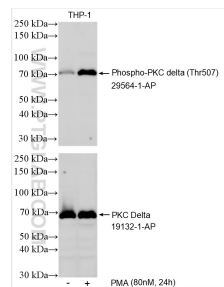
1X10⁶ HeLa cells were intracellularly stained with 0.4 ug Anti-Human PKC Delta (19132-1-AP) and CoraLite@488-Conjugated AffiniPure Goat Anti-Rabbit IgG(H+L) at dilution 1:1000 (red), or 0.4 ug Control Antibody. Cells were fixed with 4% PFA and permeabilized with Flow Cytometry Perm Buffer (PF00011-C). This data was developed using the same antibody clone with 19132-1-PBS in a different storage buffer formulation.



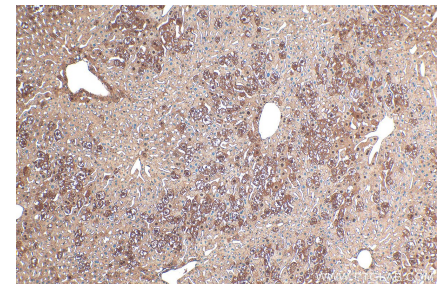
Immunofluorescent analysis of (4% PFA) fixed U-251 cells using PKC Delta antibody (19132-1-AP) at dilution of 1:400 and CoraLite@488-Conjugated AffiniPure Goat Anti-Rabbit IgG(H+L), CL594-Phalloidin (red). This data was developed using the same antibody clone with 19132-1-PBS in a different storage buffer formulation.



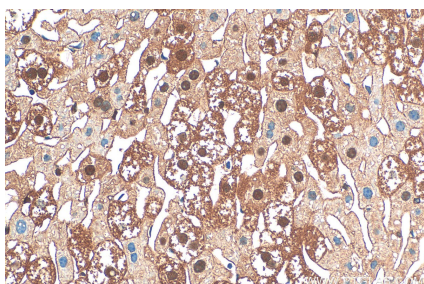
Immunofluorescent analysis of (4% PFA) fixed HeLa cells using PKC Delta antibody (19132-1-AP) at dilution of 1:400 and CoraLite@488-Conjugated AffiniPure Goat Anti-Rabbit IgG(H+L), CL594-Phalloidin (red). This data was developed using the same antibody clone with 19132-1-PBS in a different storage buffer formulation.



Non-treated and PMA treated THP-1 cells were subjected to SDS PAGE followed by western blot with 29564-1-AP (Phospho-PKC delta (Thr507) antibody) at dilution of 1:500 incubated at room temperature for 1.5 hours. The membrane was stripped and re-blotted with PKC Delta antibody (19132-1-AP) subsequently. This data was developed using the same antibody clone with 19132-1-PBS in a different storage buffer formulation.



Immunohistochemical analysis of paraffin-embedded mouse liver tissue slide using 19132-1-AP (PKC Delta antibody) at dilution of 1:200 (under 10x lens). Heat mediated antigen retrieval with Tris-EDTA buffer (pH 9.0). This data was developed using the same antibody clone with 19132-1-PBS in a different storage buffer formulation.



Immunohistochemical analysis of paraffin-embedded mouse liver tissue slide using 19132-1-AP (PKC Delta antibody) at dilution of 1:200 (under 40x lens). Heat mediated antigen retrieval with Tris-EDTA buffer (pH 9.0). This data was developed using the same antibody clone with 19132-1-PBS in a different storage buffer formulation.