

For Research Use Only

VPS11 Polyclonal antibody

Catalog Number: 19140-1-AP

Featured Product

7 Publications



Basic Information

Catalog Number:

19140-1-AP

Size:

150ul, Concentration: 600 ug/ml by Nanodrop and 300 ug/ml by Bradford method using BSA as the standard;

Source:

Rabbit

Isotype:

IgG

Immunogen Catalog Number:

AG6227

GenBank Accession Number:

BC065563

GeneID (NCBI):

55823

UNIPROT ID:

Q9H270

Full Name:

vacuolar protein sorting 11 homolog (S. cerevisiae)

Calculated MW:

108 kDa

Observed MW:

108-112 kDa

Purification Method:

Antigen affinity purification

Recommended Dilutions:

WB 1:1000-1:4000

IP 0.5-4.0 ug for 1.0-3.0 mg of total protein lysate

Applications

Tested Applications:

WB, FC (Intra), IP, ELISA

Cited Applications:

WB, IP, IF

Species Specificity:

human, mouse, rat

Cited Species:

human

Positive Controls:

WB : HEK-293 cells, human brain tissue, mouse pancreas tissue, mouse brain tissue, human kidney tissue, human heart tissue, HeLa cells, K-562 cells, rat brain tissue

IP : HEK-293 cells,

Background Information

Vesicle-mediated protein sorting plays an important role in segregating intracellular molecules into distinct organelles. In yeast, Vps proteins are involved in the trafficking of endocytic and biosynthetic proteins to the vacuole, which functionally resembles the lysosome of higher organisms. VPS11 is the human homolog of the yeast class C Vps11 protein, a subunit of the HOPS (homotypic fusion and protein transport) complex. Mammalian Vps11 may play a role in vesicle-mediated protein trafficking to lysosomal compartments and membrane docking/fusion reactions of late endosomes/lysosomes.

Notable Publications

Author	Pubmed ID	Journal	Application
Morag R Hunter	28931724	Biochem J	WB, IP
Magdalena Banach-Orłowska	30333141	J Cell Sci	IF, WB
Rik van der Kant	26463206	J Biol Chem	WB, IF

Storage

Storage:

Store at -20°C. Stable for one year after shipment.

Storage Buffer:

PBS with 0.02% sodium azide and 50% glycerol pH 7.3.

Aliquoting is unnecessary for -20°C storage

*** 20ul sizes contain 0.1% BSA

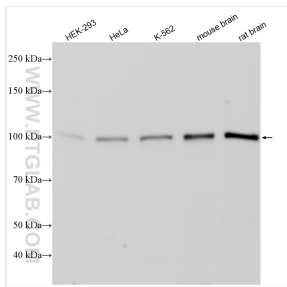
For technical support and original validation data for this product please contact:

T: 1 (888) 4PTGLAB (1-888-478-4522) (toll free in USA), or 1(312) 455-8498 (outside USA)

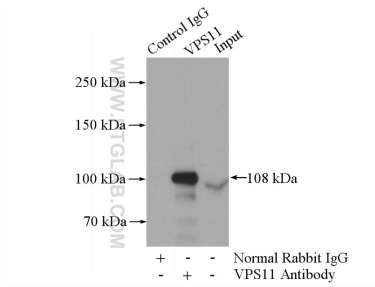
E: proteintech@ptglab.com
W: ptglab.com

This product is exclusively available under Proteintech Group brand and is not available to purchase from any other manufacturer.

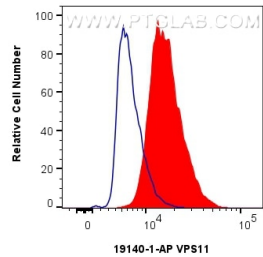
Selected Validation Data



Various lysates were subjected to SDS PAGE followed by western blot with 19140-1-AP (VPS11 antibody) at dilution of 1:2000 incubated at room temperature for 1.5 hours.



IP result of anti-VPS11 (IP:19140-1-AP, 4ug; Detection:19140-1-AP 1:500) with HEK-293 cells lysate 1480ug.



1x10⁶ HepG2 cells were intracellularly stained with 0.4 ug VPS11 Polyclonal antibody (19140-1-AP) and CoraLite®488-Conjugated Goat Anti-Rabbit IgG(H+L) (SA00013-2)(red), or 0.4 ug Rabbit IgG control Rabbit PolyAb (30000-0-AP) (blue). Cells were fixed with 4% PFA and permeabilized with Flow Cytometry Perm Buffer (PF00011-C).