

For Research Use Only

PLCH1 Polyclonal antibody

Catalog Number: 19143-1-AP

1 Publications



Basic Information

Catalog Number: 19143-1-AP	GenBank Accession Number: BC113950	Purification Method: Antigen affinity purification
Size: 150ul , Concentration: 400 µg/ml by Nanodrop and 147 µg/ml by Bradford method using BSA as the standard;	GeneID (NCBI): 23007	Recommended Dilutions: WB 1:500-1:1000 IHC 1:20-1:200 IF 1:10-1:100
Source: Rabbit	Full Name: phospholipase C, eta 1	
Isotype: IgG	Calculated MW: 1655 aa, 185 kDa	
Immunogen Catalog Number: AG13607	Observed MW: 185 kDa	

Applications

Tested Applications: IF, IHC, WB, ELISA	Positive Controls: WB : HEK-293 cells, SH-SY5Y cells
Cited Applications: WB	IHC : human brain tissue,
Species Specificity: human, mouse, rat	IF : HeLa cells, HepG2 cells
Cited Species: human	

Note-IHC: suggested antigen retrieval with **TE buffer pH 9.0; (*) Alternatively, antigen retrieval may be performed with citrate buffer pH 6.0**

Background Information

Notable Publications

Author	Pubmed ID	Journal	Application
Wei Liu	36016933	Front Immunol	WB

Storage

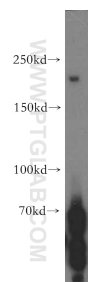
Storage:
Store at -20°C. Stable for one year after shipment.
Storage Buffer:
PBS with 0.02% sodium azide and 50% glycerol pH 7.3.
Aliquoting is unnecessary for -20°C storage

*** 20ul sizes contain 0.1% BSA

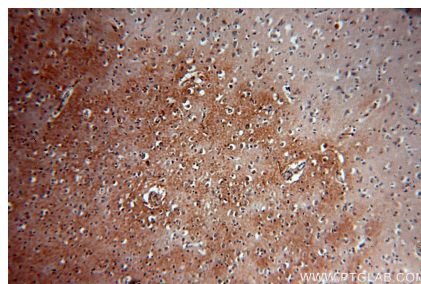
For technical support and original validation data for this product please contact:
T: 1 (888) 4PTGLAB (1-888-478-4522) (toll free in USA), or 1(312) 455-8498 (outside USA)
E: proteintech@ptglab.com
W: ptglab.com

This product is exclusively available under Proteintech Group brand and is not available to purchase from any other manufacturer.

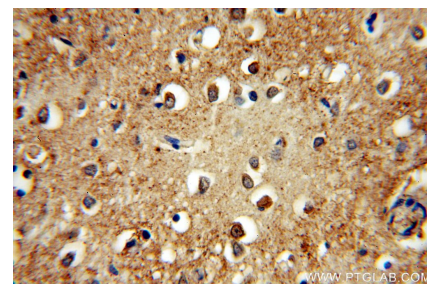
Selected Validation Data



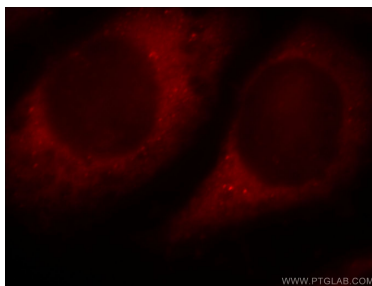
HEK-293 cells were subjected to SDS PAGE followed by western blot with 19143-1-AP (PLCH1 antibody) at dilution of 1:300 incubated at room temperature for 1.5 hours.



Immunohistochemical analysis of paraffin-embedded human brain using 19143-1-AP (PLCH1 antibody) at dilution of 1:50 (under 10x lens).



Immunohistochemical analysis of paraffin-embedded human brain using 19143-1-AP (PLCH1 antibody) at dilution of 1:50 (under 40x lens).



Immunofluorescent analysis of HeLa cells, using PLCH1 antibody 19143-1-AP at 1:25 dilution and Rhodamine-labeled goat anti-rabbit IgG (red).