

For Research Use Only

# FKBP6 Polyclonal antibody

Catalog Number: 19163-1-AP



## Basic Information

<b>Catalog Number:</b> 19163-1-AP	<b>GenBank Accession Number:</b> BC036817	<b>Purification Method:</b> Antigen affinity purification
<b>Size:</b> 150ul , Concentration: 500 ug/ml by Nanodrop;	<b>GeneID (NCBI):</b> 8468	<b>Recommended Dilutions:</b> WB 1:500-1:1000
<b>Source:</b> Rabbit	<b>UNIPROT ID:</b> O75344	<b>IF/ICC 1:10-1:100</b>
<b>Isotype:</b> IgG	<b>Full Name:</b> FK506 binding protein 6, 36kDa	
<b>Immunogen Catalog Number:</b> AG4642	<b>Calculated MW:</b> 327 aa, 37 kDa	
	<b>Observed MW:</b> 36 kDa	

## Applications

<b>Tested Applications:</b> WB, IF/ICC, ELISA	<b>Positive Controls:</b>
<b>Species Specificity:</b> human, mouse, rat	<b>WB :</b> rat testis tissue, human testis tissue, mouse testis tissue
	<b>IF/ICC :</b> MCF-7 cells,

## Background Information

Inactive peptidyl-prolyl cis-trans isomerase FKBP6 (FKBP6), also known as 36 kDa FK506-binding protein (36 kDa FKBP; FKBP-36), is a member of a gene family that contains a prolyl isomerase/FK506 binding domain and tetratricopeptide protein-protein interaction domains(PMID: 9782077). It has been linked to the secondary piRNA biogenesis in fetal male mouse germ cells ( PMID: 22902560).

## Storage

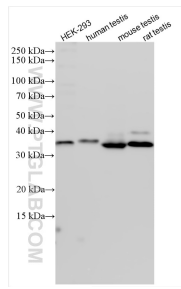
**Storage:**  
Store at -20°C. Stable for one year after shipment.  
**Storage Buffer:**  
PBS with 0.02% sodium azide and 50% glycerol pH 7.3.  
**Aliquoting is unnecessary for -20°C storage**

\*\*\* 20ul sizes contain 0.1% BSA

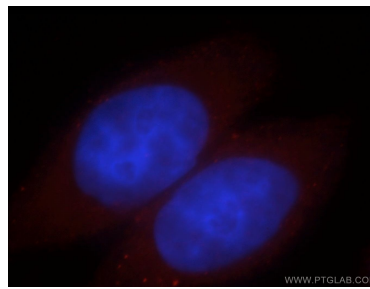
For technical support and original validation data for this product please contact:  
T: 1 (888) 4PTGLAB (1-888-478-4522) (toll free in USA), or 1(312) 455-8498 (outside USA)  
E: [proteintech@ptglab.com](mailto:proteintech@ptglab.com)  
W: [ptglab.com](http://ptglab.com)

This product is exclusively available under Proteintech Group brand and is not available to purchase from any other manufacturer.

## Selected Validation Data



Various lysates were subjected to SDS PAGE followed by western blot with 19163-1-AP (FKBP6 antibody) at dilution of 1:800 incubated at room temperature for 1.5 hours.



Immunofluorescent analysis of MCF-7 cells, using FKBP6 antibody 19163-1-AP at 1:25 dilution and Rhodamine-labeled goat anti-rabbit IgG (red). Blue pseudocolor = DAPI (fluorescent DNA dye).