

For Research Use Only

NAT1 Polyclonal antibody

Catalog Number: 19188-1-AP **2 Publications**



Basic Information

Catalog Number: 19188-1-AP	GenBank Accession Number: BC047666	Purification Method: Antigen affinity purification
Size: 150ul , Concentration: 500 µg/ml by Nanodrop and 313 µg/ml by Bradford method using BSA as the standard;	GeneID (NCBI): 9	Recommended Dilutions: WB 1:500-1:1000 IHC 1:20-1:200 IF 1:10-1:100
Source: Rabbit	Full Name: N-acetyltransferase 1 (arylamine N-acetyltransferase)	
Isotype: IgG	Calculated MW: 34 kDa	
Immunogen Catalog Number: AG6280	Observed MW: 32-34 kDa	

Applications

Tested Applications:

IF, IHC, WB, ELISA

Cited Applications:

CoIP, WB

Species Specificity:

human, mouse, rat

Cited Species:

human

Note-IHC: suggested antigen retrieval with TE buffer pH 9.0; (*) Alternatively, antigen retrieval may be performed with citrate buffer pH 6.0

Positive Controls:

WB : PC-3 cells, human placenta tissue, A375 cells

IHC : human breast cancer tissue,

IF : HeLa cells, HepG2 cells

Background Information

Notable Publications

Author	Pubmed ID	Journal	Application
Qiao Song	36243980	Nucleic Acids Res	WB,CoIP
Rushi Liu	32793479	Front Oncol	WB

Storage

Storage:

Store at -20°C. Stable for one year after shipment.

Storage Buffer:

PBS with 0.02% sodium azide and 50% glycerol pH 7.3.

Aliquoting is unnecessary for -20°C storage

*** 20ul sizes contain 0.1% BSA

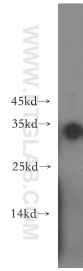
For technical support and original validation data for this product please contact:

T: 1 (888) 4PTGLAB (1-888-478-4522) (toll free in USA), or 1(312) 455-8498 (outside USA)

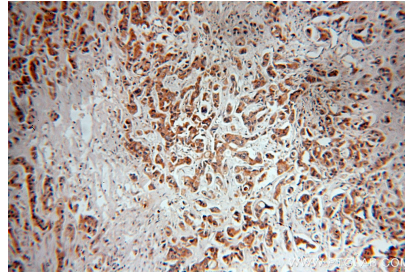
E: proteintech@ptglab.com
W: ptglab.com

This product is exclusively available under Proteintech Group brand and is not available to purchase from any other manufacturer.

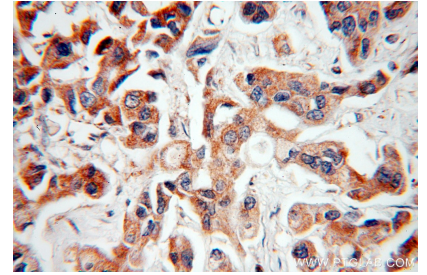
Selected Validation Data



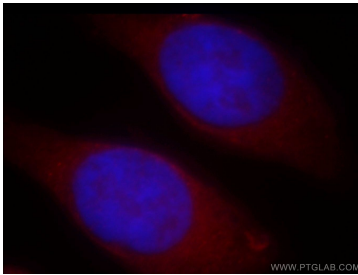
PC-3 cells were subjected to SDS PAGE followed by western blot with 19188-1-AP (NAT1 antibody) at dilution of 1:500 incubated at room temperature for 1.5 hours.



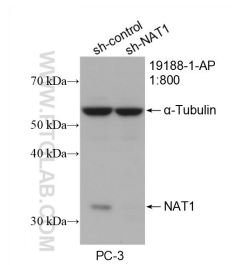
Immunohistochemical analysis of paraffin-embedded human breast cancer using 19188-1-AP (NAT1 antibody) at dilution of 1:100 (under 10x lens).



Immunohistochemical analysis of paraffin-embedded human breast cancer using 19188-1-AP (NAT1 antibody) at dilution of 1:100 (under 40x lens).



Immunofluorescent analysis of HeLa cells, using NAT1 antibody 19188-1-AP at 1:25 dilution and Rhodamine-labeled goat anti-rabbit IgG (red). Blue pseudocolor = DAPI (fluorescent DNA dye).



WB result of NAT1 antibody (19188-1-AP; 1:800; incubated at room temperature for 1.5 hours) with sh-Control and sh-NAT1 transfected PC-3 cells.