

For Research Use Only

CYP27A1 Polyclonal antibody

Catalog Number: 19195-1-AP **1 Publications**



Basic Information

Catalog Number: 19195-1-AP	GenBank Accession Number: BC051851	Purification Method: Antigen affinity purification
Size: 150ul , Concentration: 493 µg/ml by Bradford method using BSA as the standard;	GeneID (NCBI): 1593	Recommended Dilutions: WB 1:500-1:2000 IHC 1:20-1:200
Source: Rabbit	Full Name: cytochrome P450, family 27, subfamily A, polypeptide 1	
Isotype: IgG	Calculated MW: 60 kDa	
Immunogen Catalog Number: AG7746	Observed MW: 60 kDa	

Applications

Tested Applications: IHC, WB, ELISA	Positive Controls: WB : L02 cells, HepG2 cells
Cited Applications: WB	IHC : human kidney tissue,
Species Specificity: human	
Cited Species: mouse	

Note-IHC: suggested antigen retrieval with TE buffer pH 9.0; (*) Alternatively, antigen retrieval may be performed with citrate buffer pH 6.0

Background Information

Mitochondrial sterol 27-hydroxylase (CYP27A1) catalyzes oxidative cleavage of the sterol side chain in the bile acid biosynthetic pathway in the liver and 27-hydroxylation of cholesterol in most tissues (PMID:17088262). It belongs to the cytochrome P450 family. CYP27A1 catalyses an important sterol elimination pathway in the macrophage, and consequently may protect against atherosclerosis.

Notable Publications

Author	Pubmed ID	Journal	Application
Disi Bai	29722875	Toxicol Sci	WB

Storage

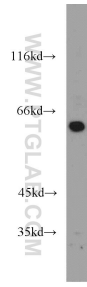
Storage:
Store at -20°C. Stable for one year after shipment.
Storage Buffer:
PBS with 0.02% sodium azide and 50% glycerol pH 7.3.
Aliquoting is unnecessary for -20°C storage

*** 20ul sizes contain 0.1% BSA

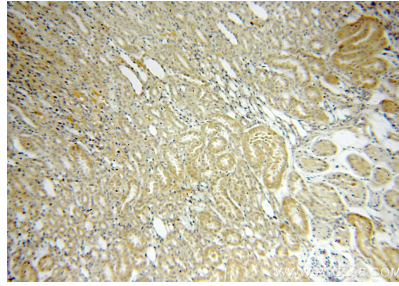
For technical support and original validation data for this product please contact:
T: 1 (888) 4PTGLAB (1-888-478-4522) (toll free in USA), or 1(312) 455-8498 (outside USA)
E: proteintech@ptglab.com
W: ptglab.com

This product is exclusively available under Proteintech Group brand and is not available to purchase from any other manufacturer.

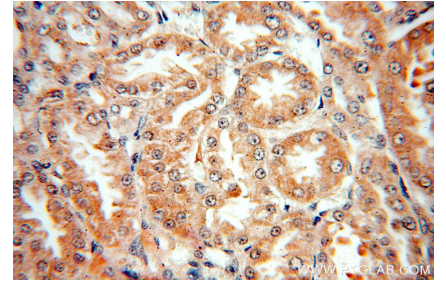
Selected Validation Data



L02 cells were subjected to SDS PAGE followed by western blot with 19195-1-AP (CYP27A1 antibody) at dilution of 1:1000 incubated at room temperature for 1.5 hours.



Immunohistochemical analysis of paraffin-embedded human kidney using 19195-1-AP (CYP27A1 antibody) at dilution of 1:100 (under 10x lens).



Immunohistochemical analysis of paraffin-embedded human kidney using 19195-1-AP (CYP27A1 antibody) at dilution of 1:100 (under 40x lens).