

TMEM27 Polyclonal antibody

Catalog Number: 19207-1-AP

Basic Information

Catalog Number: 19207-1-AP	GenBank Accession Number: BC050606	Purification Method: Antigen affinity purification
Size: 150ul , Concentration: 333 ug/ml by Bradford method using BSA as the standard;	GeneID (NCBI): 57393	Recommended Dilutions: WB 1:500-1:2000
Source: Rabbit	UNIPROT ID: Q9HBJ8	IHC 1:100-1:400
Isotype: IgG	Full Name: transmembrane protein 27	IF/ICC 1:10-1:100
Immunogen Catalog Number: AG7668	Calculated MW: 25 kDa	
	Observed MW: 32 kDa	

Applications

Tested Applications:
WB, IHC, IF/ICC, ELISA

Species Specificity:
human, mouse

Note-IHC: suggested antigen retrieval with TE buffer pH 9.0; (*) Alternatively, antigen retrieval may be performed with citrate buffer pH 6.0

Positive Controls:

WB : mouse pancreas tissue, mouse kidney tissue

IHC : human kidney tissue, human liver cancer tissue

IF/ICC : HepG2 cells,

Background Information

TMEM27 (also termed collectrin), a 46 kDa type I transmembrane protein, is a homolog of the noncatalytic domain of angiotensin-converting enzyme-related carboxypeptidase (Ace2). Its expression has only been reported in the brush border membrane of the proximal tubules and collecting ducts of the kidney and in the pancreatic b cell (PMID: 11278314, 16330324). Overexpression of TMEM27 in b cells leads to increased proliferation in vitro and increased pancreatic b cell mass in vivo, and also has been reported to augment glucosestimulated ins secretion (GSIS) (PMID: 16330324, 16330323). The abundance of TMEM27 protein in b cells is furthermore regulated by ectodomain cleavage, which leads to two cleavage products, a 25 kDa N-terminal part that is released into the extracellular space (the shed fragment), and a 22 kDa C-terminal fragment (CTF) remaining in the membrane that is rapidly degraded (PMID: 16330324). TMEM27 is an N-glycosylated protein and can form dimers with MW of 64-75 kDa (patent US 20100119489 A1). TMEM27 can be used as a beta cell mass biomarker (PMID: 20386877, 21907142).

Storage

Storage:

Store at -20°C. Stable for one year after shipment.

Storage Buffer:

PBS with 0.02% sodium azide and 50% glycerol pH 7.3.

Aliquoting is unnecessary for -20°C storage

*** 20ul sizes contain 0.1% BSA

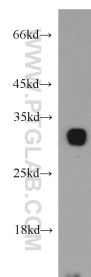
For technical support and original validation data for this product please contact:

T: 1 (888) 4PTGLAB (1-888-478-4522) (toll free in USA), or 1(312) 455-8498 (outside USA)

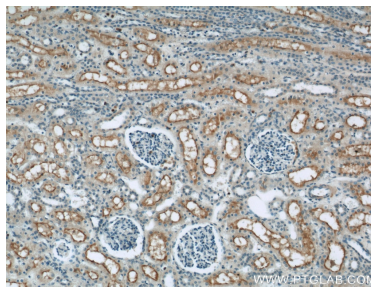
E: proteintech@ptglab.com
W: ptglab.com

This product is exclusively available under Proteintech Group brand and is not available to purchase from any other manufacturer.

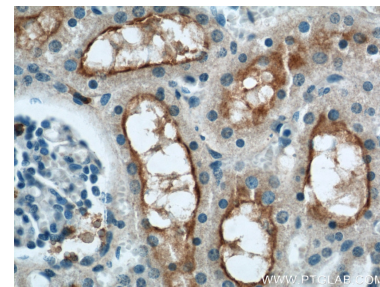
Selected Validation Data



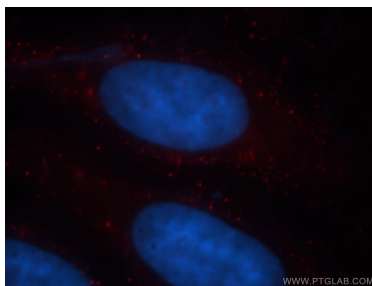
mouse pancreas tissue were subjected to SDS PAGE followed by western blot with 19207-1-AP (TMEM27 antibody) at dilution of 1:500 incubated at room temperature for 1.5 hours.



Immunohistochemical analysis of paraffin-embedded human kidney using 19207-1-AP (TMEM27 antibody) at dilution of 1:50 (under 10x lens).



Immunohistochemical analysis of paraffin-embedded human kidney using 19207-1-AP (TMEM27 antibody) at dilution of 1:50 (under 40x lens).



Immunofluorescent analysis of HepG2 cells, using TMEM27 antibody 19207-1-AP at 1:25 dilution and Rhodamine-labeled goat anti-rabbit IgG (red). Blue pseudocolor = DAPI (fluorescent DNA dye).