

For Research Use Only

SKIL Polyclonal antibody

Catalog Number: 19218-1-AP

Featured Product

13 Publications



Basic Information

Catalog Number:

19218-1-AP

Size:

150ul, Concentration: 600 ug/ml by Nanodrop;

Source:

Rabbit

Isotype:

IgG

Immunogen Catalog Number:

AG5282

GenBank Accession Number:

BC059386

GeneID (NCBI):

6498

UNIPROT ID:

P12757

Full Name:

SKI-like oncogene

Calculated MW:

77 kDa

Observed MW:

77 kDa

Purification Method:

Antigen affinity purification

Recommended Dilutions:

WB 1:1000-1:8000

IP 0.5-4.0 ug for 1.0-3.0 mg of total protein lysate

IHC 1:50-1:500

IF/ICC 1:50-1:500

Applications

Tested Applications:

WB, IHC, IF/ICC, IP, ELISA

Cited Applications:

WB, IF, IHC, CoIP

Species Specificity:

human

Cited Species:

human, mouse

Note-IHC: suggested antigen retrieval with TE buffer pH 9.0; (*) Alternatively, antigen retrieval may be performed with citrate buffer pH 6.0

Positive Controls:

WB: A431 cells, human skeletal muscle tissue, HepG2 cells, MCF-7 cells

IP: HepG2 cells,

IHC: human endometrial cancer tissue,

IF/ICC: HepG2 cells,

Background Information

SKIL, also known as SnoN, is a mediator of the transforming growth factor- β (TGF- β) signaling pathway and exerts pro-oncogenic activity through inhibiting TGF- β /Smad pathway (PMID: 19114989). SKIL is involved in reduction of autophagy and subsequent tumor cell apoptosis in arsenic trioxide-treated promyelocytic leukemia and ovarian carcinoma. In addition, SKIL may regulate cell division or differentiation in response to extracellular signals.

Notable Publications

Author	Pubmed ID	Journal	Application
Jin Zhang	34605238	J Med Chem	WB
Xiaoying Chen	30425119	J Neurosci	
Victor Laigle	34740826	Mol Cell Proteomics	WB

Storage

Storage:

Store at -20°C. Stable for one year after shipment.

Storage Buffer:

PBS with 0.02% sodium azide and 50% glycerol pH 7.3.

Aliquoting is unnecessary for -20°C storage

*** 20ul sizes contain 0.1% BSA

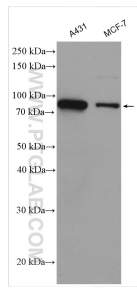
For technical support and original validation data for this product please contact:

T: 1 (888) 4PTGLAB (1-888-478-4522) (toll free in USA), or 1(312) 455-8498 (outside USA)

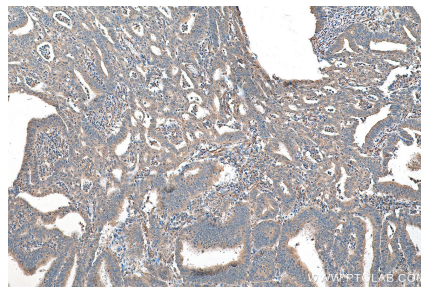
E: proteintech@ptglab.com
W: ptglab.com

This product is exclusively available under Proteintech Group brand and is not available to purchase from any other manufacturer.

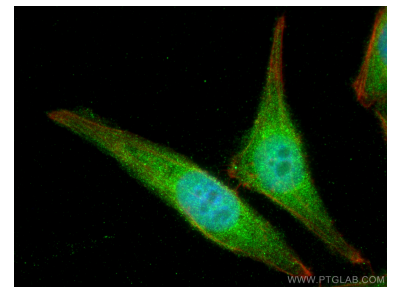
Selected Validation Data



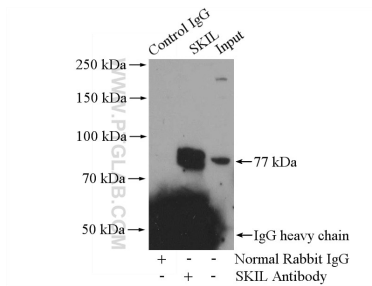
Various lysates were subjected to SDS PAGE followed by western blot with 19218-1-AP (SKIL antibody) at dilution of 1:4000 incubated at room temperature for 1.5 hours.



Immunohistochemical analysis of paraffin-embedded human endometrial cancer tissue slide using 19218-1-AP (SKIL antibody) at dilution of 1:200 (under 10x lens). Heat mediated antigen retrieval with Tris-EDTA buffer (pH 9.0).



Immunofluorescent analysis of (4% PFA) fixed HepG2 cells using SKIL antibody (19218-1-AP) at dilution of 1:200 and CoraLite®488-Conjugated Goat Anti-Rabbit IgG(H+L).



IP result of anti-SKIL (IP:19218-1-AP, 4ug; Detection:19218-1-AP 1:500) with HepG2 cells lysate 1600ug.