

For Research Use Only

CD39/ENTPD1 Polyclonal antibody

Catalog Number: 19229-1-AP

8 Publications



Basic Information

| | | |
|--|---|---|
| Catalog Number: 19229-1-AP | GenBank Accession Number: BC047664 | Purification Method: Antigen affinity purification |
| Size: 150ul , Concentration: 240 µg/ml by Nanodrop and 200 µg/ml by Bradford method using BSA as the standard; | GeneID (NCBI): 953 | Recommended Dilutions: WB 1:500-1:2000 IP 0.5-4.0 ug for 1.0-3.0 mg of total protein lysate IHC 1:20-1:200 IF 1:50-1:500 |
| Source: Rabbit | Full Name: ectonucleoside triphosphate diphosphohydrolase 1 | |
| Isotype: IgG | Calculated MW: 58 kDa | |
| Immunogen Catalog Number: AG6165 | Observed MW: 75-95 kDa | |

Applications

| | |
|--|---|
| Tested Applications: FC, IF, IHC, IP, WB, ELISA | Positive Controls: |
| Cited Applications: FC, IF, IHC, WB | WB : Jurkat cells, HL-60 cells, human liver tissue, mouse brain tissue, mouse liver tissue |
| Species Specificity: human, mouse, rat | IP : mouse liver tissue, |
| Cited Species: human, rat, mouse | IHC : human placenta tissue, human liver tissue, human tonsillitis tissue |
| Note-IHC: suggested antigen retrieval with TE buffer pH 9.0; (*) Alternatively, antigen retrieval may be performed with citrate buffer pH 6.0 | IF : human placenta tissue, |

Background Information

ENTPD1(Ectonucleoside triphosphate diphosphohydrolase 1) is also named CD39, NTPDase 1, and Ecto-ATPDase 1 and belongs to the GDA1/CD39 NTPase family. In the nervous system, it can hydrolyze ATP and other nucleotides to regulate purinergic neurotransmission. It is a noncovalent tetrameric protein and detergent inhibition of enzymatic activity is caused by dissociation of ectoapyrase tetramers into monomers(PMID: 9733785). And it is a 70- to 100-kDa protein that is heavily N-glycosylated(PMID:7930580). It has 3 isoforms produced by alternative splicing. CD39 preferentially occurred as a dimer that could be dissociated into monomeric forms. (PMID: 12694193). The soluble isoform of CD39(38-478 amino acid) is located in the extracellular part and 19229-1-AP recognizes both the 3 isoforms and the soluble form of CD39 (38-478aa) molecule.

Notable Publications

| Author | Pubmed ID | Journal | Application |
|--------------|-----------|---------------------------|-------------|
| Wenjia Liu | 30210899 | Bone Res | WB |
| Yunshuo Zhao | 34648290 | J Chem Inf Model | FC |
| Hao Cui | 36436019 | Cancer Immunol Immunother | WB,IHC |

Storage

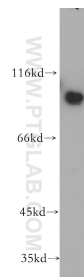
Storage:
Store at -20°C. Stable for one year after shipment.
Storage Buffer:
PBS with 0.02% sodium azide and 50% glycerol pH 7.3.
Aliquoting is unnecessary for -20°C storage

*** 20ul sizes contain 0.1% BSA

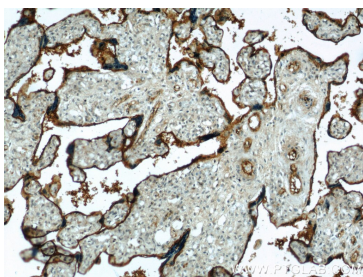
For technical support and original validation data for this product please contact:
T: 1 (888) 4PTGLAB (1-888-478-4522) (toll free in USA), or 1(312) 455-8498 (outside USA)
E: proteintech@ptglab.com
W: ptglab.com

This product is exclusively available under Proteintech Group brand and is not available to purchase from any other manufacturer.

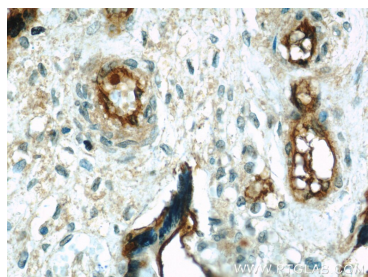
Selected Validation Data



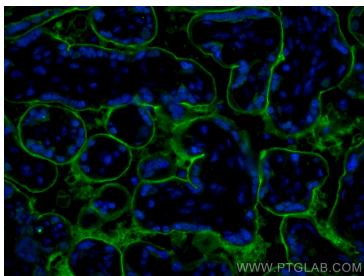
Jurkat cells were subjected to SDS PAGE followed by western blot with 19229-1-AP (CD39 antibody) at dilution of 1:500 incubated at room temperature for 1.5 hours.



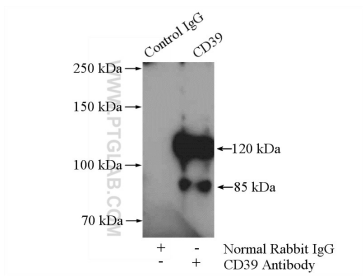
Immunohistochemical analysis of paraffin-embedded human placenta using 19229-1-AP (CD39 antibody) at dilution of 1:50 (under 10x lens).



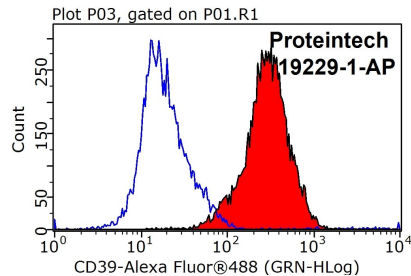
Immunohistochemical analysis of paraffin-embedded human placenta using 19229-1-AP (CD39 antibody) at dilution of 1:50 (under 40x lens).



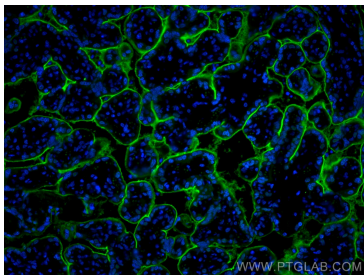
Immunofluorescent analysis of (4% PFA) fixed human placenta tissue using CD39/ENTPD1 antibody (19229-1-AP) at dilution of 1:200 and CoraLite®488-Conjugated AffiniPure Goat Anti-Rabbit IgG(H+L).



IP Result of anti-CD39 (IP:19229-1-AP, 4ug; Detection:19229-1-AP 1:800) with mouse liver tissue lysate 4000ug.



1X10⁶ Jurkat cells were stained with 0.5ug CD39 antibody (19229-1-AP, red) and control antibody (blue). Fixed with 90% MeOH blocked with 3% BSA (30 min). Alexa Fluor 488-conjugated AffiniPure Goat Anti-Rabbit IgG(H+L) with dilution 1:1000.



Immunofluorescent analysis of (4% PFA) fixed human placenta tissue using CD39/ENTPD1 antibody (19229-1-AP) at dilution of 1:200 and CoraLite®488-Conjugated AffiniPure Goat Anti-Rabbit IgG(H+L).