

For Research Use Only

SEMA3C Polyclonal antibody

Catalog Number: 19242-1-AP

Featured Product

2 Publications



Basic Information

Catalog Number:

19242-1-AP

Size:

150ul, Concentration: 220 µg/ml by Nanodrop and 220 µg/ml by Bradford method using BSA as the standard;

Source:

Rabbit

Isotype:

IgG

Immunogen Catalog Number:

AG5480

GenBank Accession Number:

BC030690

GeneID (NCBI):

10512

UNIPROT ID:

Q99985

Full Name:

sema domain, immunoglobulin domain (Ig), short basic domain, secreted, (semaphorin) 3C

Calculated MW:

85 kDa

Observed MW:

70 kDa

Purification Method:

Antigen affinity purification

Recommended Dilutions:

WB 1:500-1:2000

Applications

Tested Applications:

WB, ELISA

Cited Applications:

WB

Species Specificity:

human, mouse

Cited Species:

human

Positive Controls:

WB : mouse heart tissue,

Background Information

SEMA3C (Semaphorin 3C) is associated with tumor progression and poor prognosis across multiple tumor types, including pancreatic, gastric, prostate, and breast cancer, as well as glioma. It is worth noting that full-length SEMA3C has also been reported as a tumor suppressor factor by suppressing tumor lymphangiogenesis and metastasis (PMID: 31649890).

Notable Publications

Author	Pubmed ID	Journal	Application
Ruoyan Liu	31649890	Front Oncol	WB
Dalin Zhang	35785187	Front Oncol	WB

Storage

Storage:

Store at -20°C. Stable for one year after shipment.

Storage Buffer:

PBS with 0.02% sodium azide and 50% glycerol pH 7.3.

Aliquoting is unnecessary for -20°C storage

*** 20ul sizes contain 0.1% BSA

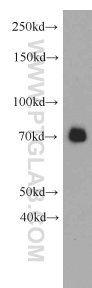
For technical support and original validation data for this product please contact:

T: 1 (888) 4PTGLAB (1-888-478-4522) (toll free in USA), or 1(312) 455-8498 (outside USA)

E: proteintech@ptglab.com
W: ptglab.com

This product is exclusively available under Proteintech Group brand and is not available to purchase from any other manufacturer.

Selected Validation Data



mouse heart tissue were subjected to SDS PAGE followed by western blot with 19242-1-AP (SEMA3C antibody) at dilution of 1:500 incubated at room temperature for 1.5 hours.