

For Research Use Only

ATN1 Polyclonal antibody

Catalog Number: 19243-1-AP



Basic Information

Catalog Number: 19243-1-AP	GenBank Accession Number: BC051795	Purification Method: Antigen affinity purification
Size: 150ul , Concentration: 260 µg/ml by Nanodrop and 227 µg/ml by Bradford method using BSA as the standard;	GeneID (NCBI): 1822	Recommended Dilutions: WB 1:200-1:1000 IHC 1:20-1:200
Source: Rabbit	Full Name: atrophin 1	
Isotype: IgG	Calculated MW: 125 kDa	
Immunogen Catalog Number: AG5835	Observed MW: 105-110 kDa	

Applications

Tested Applications: IHC, WB, ELISA	Positive Controls: WB : mouse testis tissue, IHC : human ovary tissue, human testis tissue
Species Specificity: human, mouse	
Note-IHC: suggested antigen retrieval with TE buffer pH 9.0; (*) Alternatively, antigen retrieval may be performed with citrate buffer pH 6.0	

Background Information

ATN1 also known as Atrophia-1 is a protein that in humans is encoded by the ATN1 gene. Dentatorubral pallidoluysian atrophy is a rare neurodegenerative disorder characterized by cerebellar ataxia, myoclonic epilepsy, choreoathetosis, and dementia. The disorder is related to the expansion of a trinucleotide repeat within this gene. The encoded protein includes a serine repeat and a region of alternating acidic and basic amino acids, as well as the variable glutamine repeat.

Storage

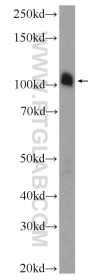
Storage:
Store at -20°C. Stable for one year after shipment.
Storage Buffer:
PBS with 0.02% sodium azide and 50% glycerol pH 7.3.
Aliquoting is unnecessary for -20°C storage

*** 20ul sizes contain 0.1% BSA

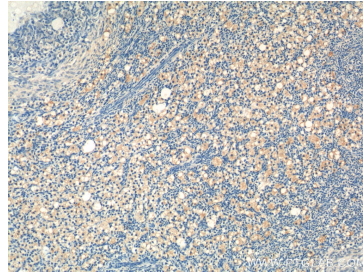
For technical support and original validation data for this product please contact:
T: 1 (888) 4PTGLAB (1-888-478-4522) (toll free in USA), or 1(312) 455-8498 (outside USA)
E: proteintech@ptglab.com
W: ptglab.com

This product is exclusively available under Proteintech Group brand and is not available to purchase from any other manufacturer.

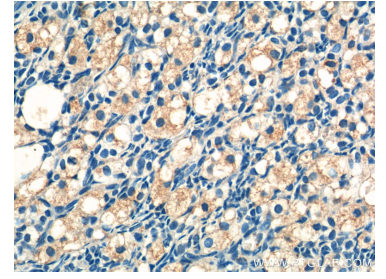
Selected Validation Data



mouse testis tissue were subjected to SDS PAGE followed by western blot with 19243-1-AP (ATN1 Antibody) at dilution of 1:300 incubated at room temperature for 1.5 hours.



Immunohistochemical analysis of paraffin-embedded human ovary tissue slide using 19243-1-AP (ATN1 Antibody) at dilution of 1:50 (under 10x lens).



Immunohistochemical analysis of paraffin-embedded human ovary tissue slide using 19243-1-AP (ATN1 Antibody) at dilution of 1:50 (under 40x lens).