

For Research Use Only

# EGFL7 Polyclonal antibody

Catalog Number: 19291-1-AP

Featured Product

12 Publications



## Basic Information

Catalog Number:

19291-1-AP

Size:

150ul, Concentration: 550 ug/ml by Nanodrop;

Source:

Rabbit

Isotype:

IgG

Immunogen Catalog Number:

AG6559

GenBank Accession Number:

BC012377

GeneID (NCBI):

51162

UNIPROT ID:

Q9UHF1

Full Name:

EGF-like-domain, multiple 7

Calculated MW:

273 aa, 30 kDa

Observed MW:

30 kDa

Purification Method:

Antigen affinity purification

Recommended Dilutions:

WB 1:200-1:1000

## Applications

Tested Applications:

WB, ELISA

Cited Applications:

WB, IHC, IF

Species Specificity:

human, rat

Cited Species:

human, mouse, rat

Positive Controls:

WB : rat eye tissue,

## Background Information

Epidermal growth factor-like domain-containing protein 7 (EGFL7), also known as vascular endothelial statin, is an endothelial cell-derived secreted factor that regulates vascular tube formation. This protein may be involved in the growth and proliferation of tumor cells. Recent studies have reported elevated expression of EGFL7 in several tumors and cancer cell lines, including kidney tumors, malignant gliomas, hepatocellular carcinomas, and colon cancers.

## Notable Publications

Author	Pubmed ID	Journal	Application
Xiao-Hong Wang	25270395	Int J Mol Med	WB
Caterina L Mammola	30504933	Eur J Histochem	IHC
Chunqing Yang	32464549	Mol Ther Nucleic Acids	WB

## Storage

Storage:

Store at -20°C. Stable for one year after shipment.

Storage Buffer:

PBS with 0.02% sodium azide and 50% glycerol pH 7.3.

Aliquoting is unnecessary for -20°C storage

\*\*\* 20ul sizes contain 0.1% BSA

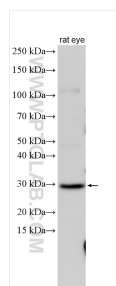
For technical support and original validation data for this product please contact:

T: 1 (888) 4PTGLAB (1-888-478-4522) (toll free in USA), or 1(312) 455-8498 (outside USA)

E: [proteintech@ptglab.com](mailto:proteintech@ptglab.com)  
W: [ptglab.com](http://ptglab.com)

This product is exclusively available under Proteintech Group brand and is not available to purchase from any other manufacturer.

## Selected Validation Data



Various lysates were subjected to SDS PAGE followed by western blot with 19291-1-AP (EGFL7 antibody) at dilution of 1:300 incubated at room temperature for 1.5 hours.