

For Research Use Only

LCA5 Polyclonal antibody

Catalog Number: 19333-1-AP **6 Publications**



Basic Information

Catalog Number: 19333-1-AP	GenBank Accession Number: BC050327	Purification Method: Antigen affinity purification
Size: 150ul , Concentration: 850 µg/ml by Nanodrop;	GeneID (NCBI): 167691	Recommended Dilutions: WB 1:200-1:1000
Source: Rabbit	Full Name: Leber congenital amaurosis 5	
Isotype: IgG	Calculated MW: 693 aa, 80 kDa	
Immunogen Catalog Number: AG5140	Observed MW: 80 kDa	

Applications

Tested Applications: WB,ELISA	Positive Controls: WB : HeLa cells,
Cited Applications: CoIP, IF, WB	
Species Specificity: human	
Cited Species: human, mouse, pig	

Background Information

LCA5 (Leber congenital amaurosis 5), also named as C6orf152 or Lebercilin, is a 697 amino acids protein. LCA5 is widely expressed at the microtubules, centrosome, and primary cilia. Recent study showed that LCA5 was involved in the cause of congenital and early-onset retinal dystrophies (PMID: 24144451). The MW of this protein is 80 kDa, and this antibody specially recognises the 80 kDa protein.

Notable Publications

Author	Pubmed ID	Journal	Application
Tamás Szaniszló	36114230	Sci Rep	WB,IF,CoIP
Marcus Karlstetter	24833722	Hum Mol Genet	IF
Ji Yun Song	29673930	Mol Ther	

Storage

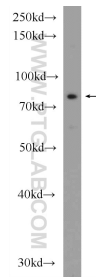
Storage:
Store at -20°C. Stable for one year after shipment.
Storage Buffer:
PBS with 0.02% sodium azide and 50% glycerol pH 7.3.
Aliquoting is unnecessary for -20°C storage

*** 20ul sizes contain 0.1% BSA

For technical support and original validation data for this product please contact:
T: 1 (888) 4PTGLAB (1-888-478-4522) (toll free in USA), or 1(312) 455-8498 (outside USA)
E: proteintech@ptglab.com
W: ptglab.com

This product is exclusively available under Proteintech Group brand and is not available to purchase from any other manufacturer.

Selected Validation Data



HeLa cells were subjected to SDS PAGE followed by western blot with 19333-1-AP (LCA5 Antibody) at dilution of 1:300 incubated at room temperature for 1.5 hours.