

For Research Use Only

CLEC4E Polyclonal antibody

Catalog Number: 19376-1-AP



Basic Information

Catalog Number:

19376-1-AP

Size:

150ul , Concentration: 350 ug/ml by Nanodrop;

Source:

Rabbit

Isotype:

IgG

Immunogen Catalog Number:

AG7292

GenBank Accession Number:

BC000715

GeneID (NCBI):

26253

UNIPROT ID:

Q9ULY5

Full Name:

C-type lectin domain family 4, member E

Calculated MW:

25 kDa

Observed MW:

25 kDa

Purification Method:

Antigen affinity purification

Recommended Dilutions:

WB 1:500-1:2000

Applications

Tested Applications:

WB, ELISA

Species Specificity:

human

Positive Controls:

WB : HeLa cells, Raji cells, THP-1 cells

Storage

Storage:

Store at -20°C. Stable for one year after shipment.

Storage Buffer:

PBS with 0.02% sodium azide and 50% glycerol pH 7.3.

Aliquoting is unnecessary for -20°C storage

*** 20ul sizes contain 0.1% BSA

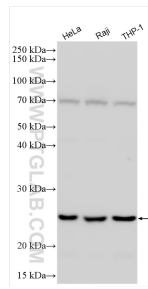
For technical support and original validation data for this product please contact:

T: 1 (888) 4PTGLAB (1-888-478-4522) (toll free in USA), or 1(312) 455-8498 (outside USA)

E: proteintech@ptglab.com
W: ptglab.com

This product is exclusively available under Proteintech Group brand and is not available to purchase from any other manufacturer.

Selected Validation Data



Various lysates were subjected to SDS PAGE followed by western blot with 19376-1-AP (CLEC4E antibody) at dilution of 1:1000 incubated at room temperature for 1.5 hours.