

For Research Use Only

ABHD14A Polyclonal antibody

Catalog Number:19419-1-AP



Basic Information

Catalog Number:

19419-1-AP

Size:

150ul , Concentration: 400 ug/ml by Nanodrop and 207 ug/ml by Bradford method using BSA as the standard;

Source:

Rabbit

Isotype:

IgG

Immunogen Catalog Number:

AG13744

GenBank Accession Number:

BC002571

GeneID (NCBI):

25864

UNIPROT ID:

Q9BUJO

Full Name:

abhydrolase domain containing 14A

Calculated MW:

271 aa, 30 kDa

Observed MW:

30-32 kDa

Purification Method:

Antigen affinity purification

Recommended Dilutions:

WB 1:500-1:1000

IP 0.5-4.0 ug for 1.0-3.0 mg of total protein lysate

IF/ICC 1:200-1:800

Applications

Tested Applications:

WB, IF/ICC, IP, ELISA

Species Specificity:

human, mouse, rat

Positive Controls:

WB : mouse kidney tissue,

IP : mouse kidney tissue,

IF/ICC : HeLa cells,

Storage

Storage:

Store at -20°C. Stable for one year after shipment.

Storage Buffer:

PBS with 0.02% sodium azide and 50% glycerol pH 7.3.

Aliquoting is unnecessary for -20°C storage

*** 20ul sizes contain 0.1% BSA

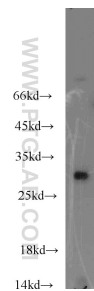
For technical support and original validation data for this product please contact:

T: 1 (888) 4PTGLAB (1-888-478-4522) (toll free in USA), or 1(312) 455-8498 (outside USA)

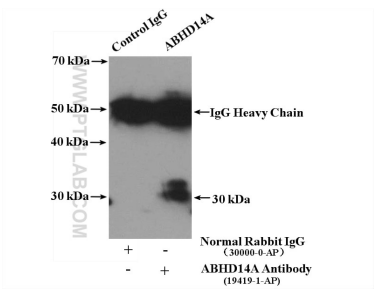
E: proteintech@ptglab.com
W: ptglab.com

This product is exclusively available under Proteintech Group brand and is not available to purchase from any other manufacturer.

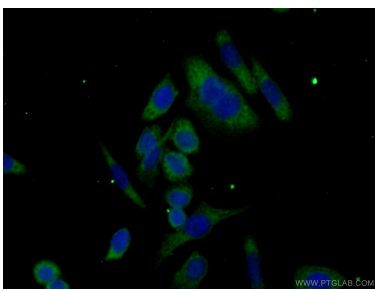
Selected Validation Data



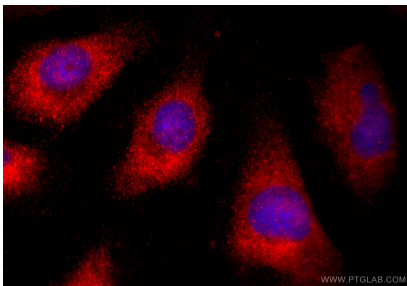
mouse kidney tissue were subjected to SDS PAGE followed by western blot with 19419-1-AP (ABHD14A antibody) at dilution of 1:300 incubated at room temperature for 1.5 hours.



IP result of anti-ABHD14A (IP:19419-1-AP, 4ug; Detection:19419-1-AP 1:300) with mouse kidney tissue lysate 4000ug.



Immunofluorescent analysis of (-20°C Ethanol) fixed HeLa cells using 19419-1-AP (ABHD14A antibody) at dilution of 1:50 and Alexa Fluor 488-conjugated AffiniPure Goat Anti-Rabbit IgG(H+L).



Immunofluorescent analysis of (-20°C Ethanol) fixed HeLa cells using ABHD14A antibody (19419-1-AP) at dilution of 1:400 and CoraLite®594-Conjugated Goat Anti-Rabbit IgG(H+L) (SA00013-4).