

For Research Use Only

# ABHD14A Polyclonal antibody, PBS Only

Catalog Number: 19419-1-PBS



## Basic Information

**Catalog Number:**

19419-1-PBS

**Size:**

100ug, Concentration: 1 mg/ml by Nanodrop;

**Source:**

Rabbit

**Isotype:**

IgG

**Immunogen Catalog Number:**

AG13744

**GenBank Accession Number:**

BC002571

**GeneID (NCBI):**

25864

**UNIPROT ID:**

Q9BUJO

**Full Name:**

abhydrolase domain containing 14A

**Calculated MW:**

271 aa, 30 kDa

**Observed MW:**

30-32 kDa

**Purification Method:**

Antigen affinity purification

## Applications

**Tested Applications:**

WB, IF/ICC, IP, Indirect ELISA

**Species Specificity:**

human, mouse, rat

## Storage

**Storage:**

Store at -80°C.

**Storage Buffer:**

PBS Only

For technical support and original validation data for this product please contact:

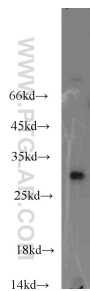
T: 1 (888) 4PTGLAB (1-888-478-4522) (toll free in USA), or 1(312) 455-8498 (outside USA)

E: [proteintech@ptglab.com](mailto:proteintech@ptglab.com)

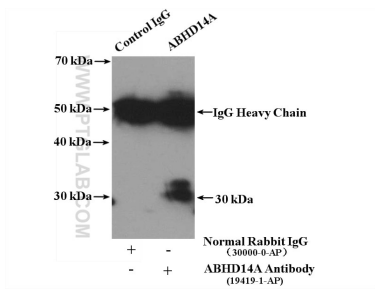
W: [ptglab.com](http://ptglab.com)

This product is exclusively available under Proteintech Group brand and is not available to purchase from any other manufacturer.

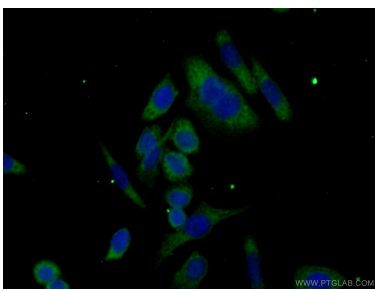
Selected Validation Data



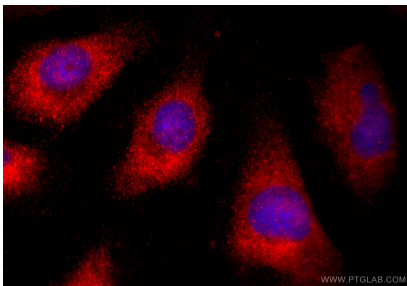
mouse kidney tissue were subjected to SDS PAGE followed by western blot with 19419-1-AP (ABHD14A antibody) at dilution of 1:300 incubated at room temperature for 1.5 hours. This data was developed using the same antibody clone with 19419-1-PBS in a different storage buffer formulation.



IP result of anti-ABHD14A (IP:19419-1-AP, 4ug; Detection:19419-1-AP 1:300) with mouse kidney tissue lysate 4000ug. This data was developed using the same antibody clone with 19419-1-PBS in a different storage buffer formulation.



Immunofluorescent analysis of (-20°C Ethanol) fixed HeLa cells using 19419-1-AP (ABHD14A antibody) at dilution of 1:50 and Alexa Fluor 488-conjugated AffiniPure Goat Anti-Rabbit IgG(H+L). This data was developed using the same antibody clone with 19419-1-PBS in a different storage buffer formulation.



Immunofluorescent analysis of (-20°C Ethanol) fixed HeLa cells using ABHD14A antibody (19419-1-AP) at dilution of 1:400 and CoraLite®594-Conjugated Goat Anti-Rabbit IgG(H+L) (SA00013-4). This data was developed using the same antibody clone with 19419-1-PBS in a different storage buffer formulation.